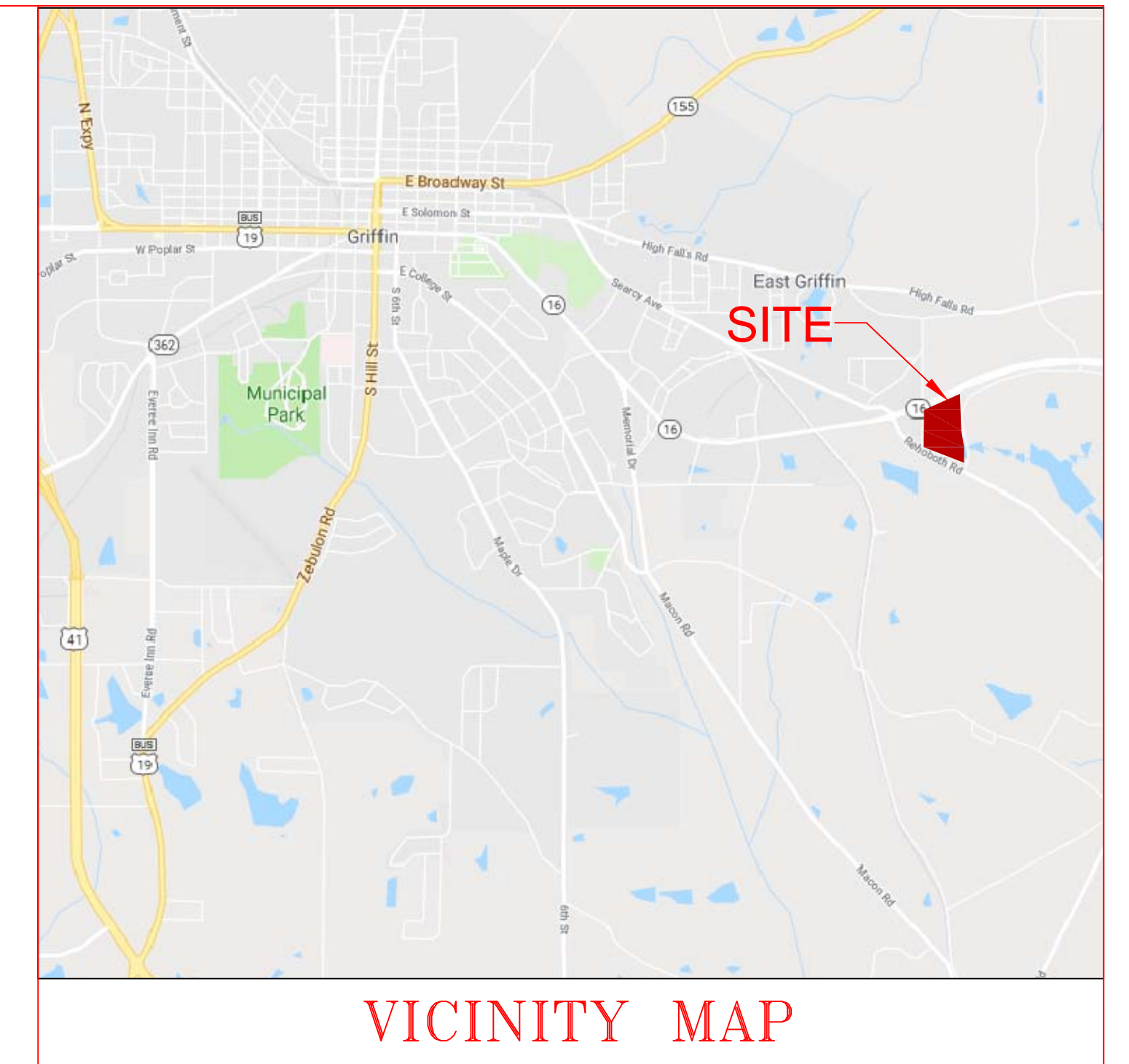
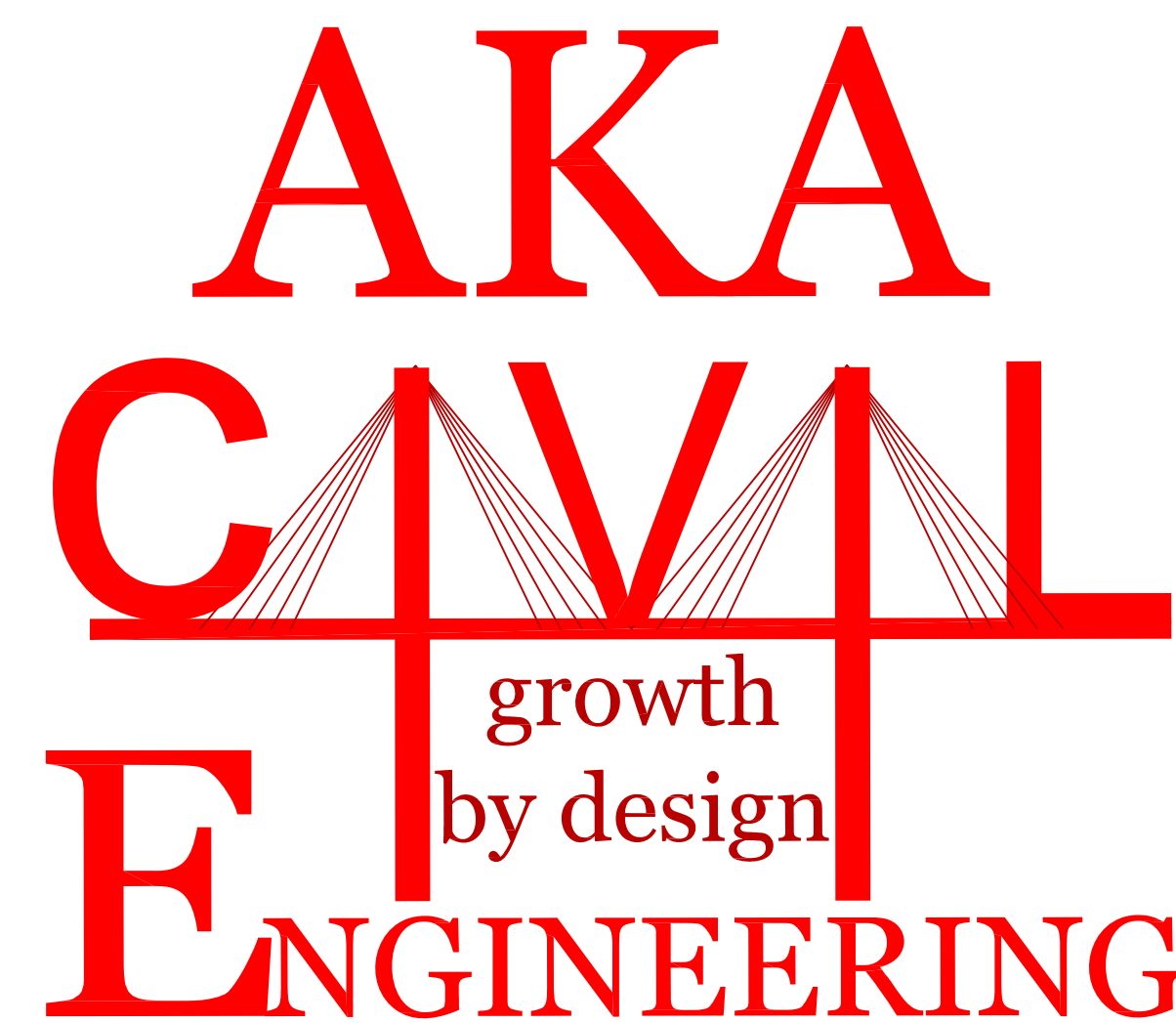


# SITE CONSTRUCTION PLANS



# LAKES AT GREEN VALLEY INDUSTRIAL PARK

PREPARED FOR:  
GRIFFIN-SPALDING DEVELOPMENT AUTHORITY  
109 EAST SOLOMON STREET  
GRIFFIN, GA 30224-1009



DRIFTMIER ENGINEERING CENTER  
597 DW BROOKS DRIVE  
ATHENS, GA 30602  
912-230-7334 (CELL)



## CONTENTS

SHEET		DATE
	COVER	04/09/18
G1	GENERAL NOTES	04/09/18
G2	EXISTING CONDITIONS	04/09/18
G3	DEMOLITION PLAN	04/09/18
G4	SITE DESIGN	04/09/18
C1	GRADING PLAN	04/09/18
C2	STORM WATER MANAGEMENT PLAN	04/09/18
C3	SEWER PLAN	04/09/18
C4	WATER PLAN	04/09/18
E1	EROSION SEDIMENT & POLLUTION CONTROL PLAN	04/09/18
E2	EROSION SEDIMENT & POLLUTION CONTROL DETAILS	04/09/18
E3	LANDSCAPING PLAN	04/09/18
A1	PERMITTING APPLICATIONS AND CHECKLIST	04/09/18
A2	COST ESTIMATE	04/09/18





MAGNETIC NORTH

0 100 200 300 400

SCALE: 1"=100'

REVISIONS

AKA CIVIL ENGINEERING  
597 DW BROOKS DRIVE  
ATHENS, GA 30602  
912-230-7334 CELL

**EXISTING CONDITIONS**

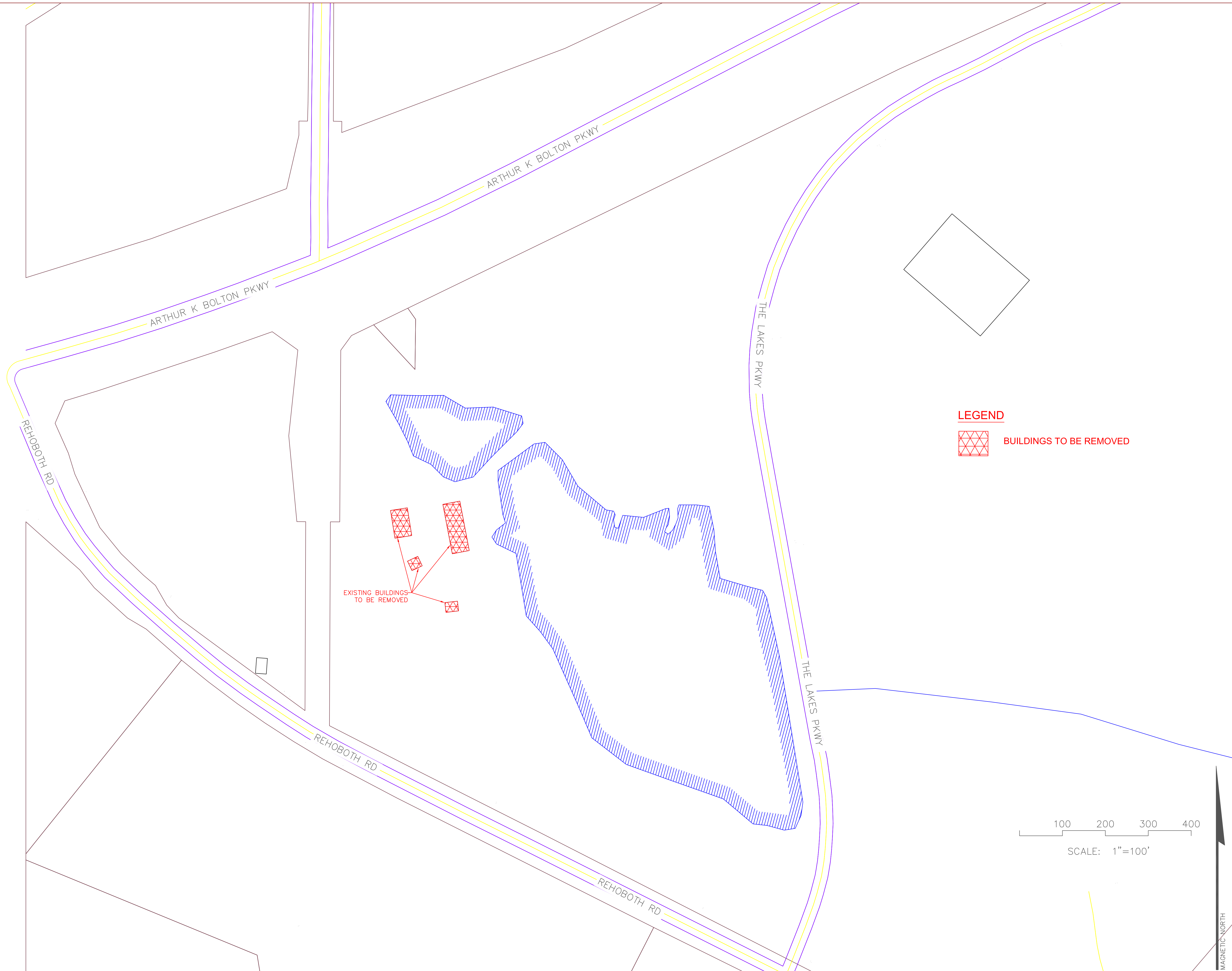
**LAKES AT GREEN VALLEY INDUSTRIAL PARK**  
**SPALDING COUNTY, GA**

PREPARED FOR:  
**GRIFFIN-SPALDING DEVELOPMENT AUTHORITY**

DATE: 2018-04-09  
DRAWN BY: XXX  
CHECKED BY: XXX  
SCALE: 1"=100' (FOR 24"x36")



SHEET:



REVISIONS

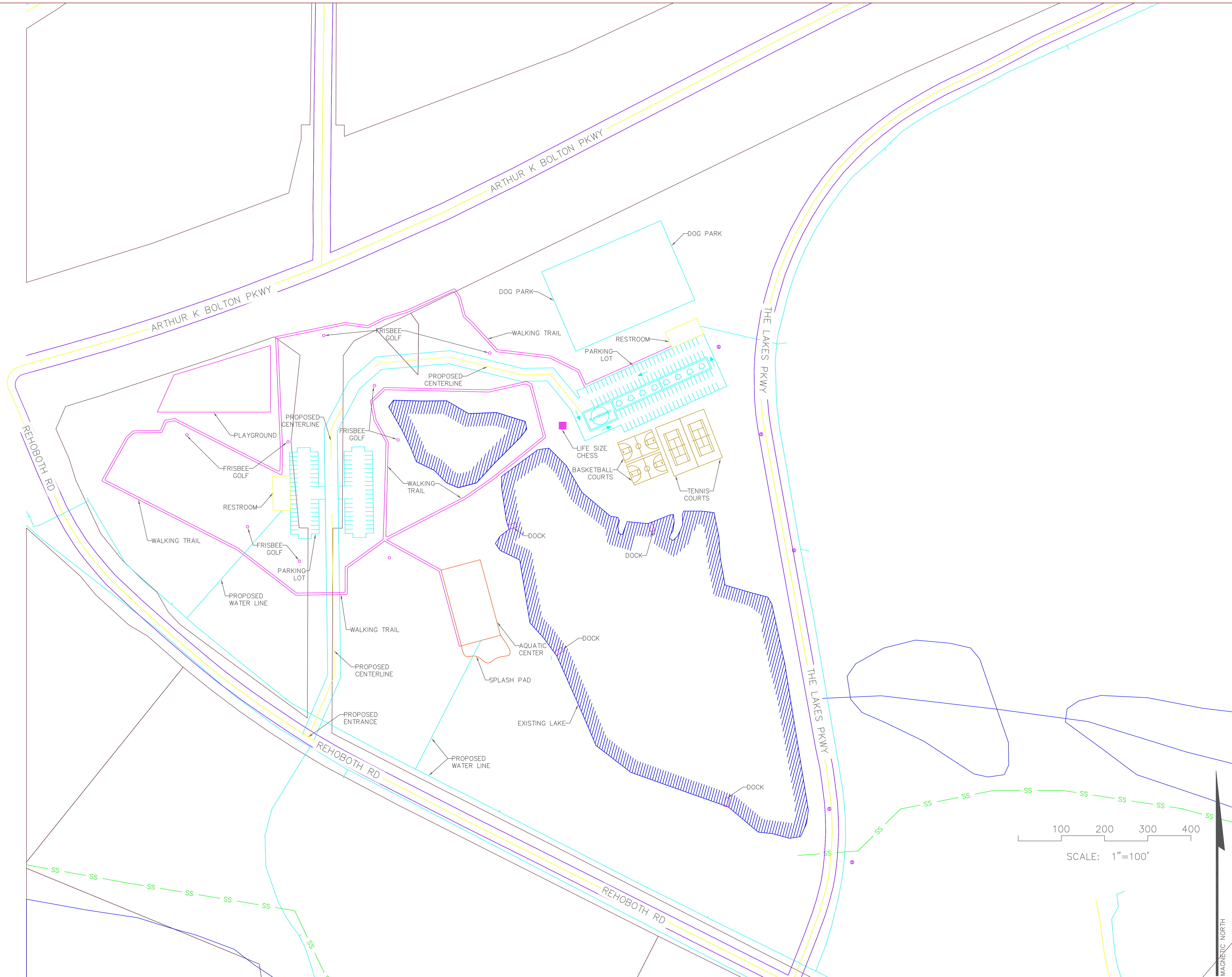
AKA CIVIL ENGINEERING  
 597 DW BROOKS DRIVE  
 ATHENS, GA 30602  
 912-230-7334 CELL

**DEMOLITION PLAN**  
**LAKES AT GREEN VALLEY INDUSTRIAL PARK**  
**SPALDING COUNTY, GA**  
 PREPARED FOR:  
**GRIFFIN-SPALDING DEVELOPMENT AUTHORITY**

DATE: 2018-04-09  
 DRAWN BY: XXX  
 CHECKED BY: XXX  
 SCALE: 1"=100' (FOR 24"x36")

**G3**

SHEET:

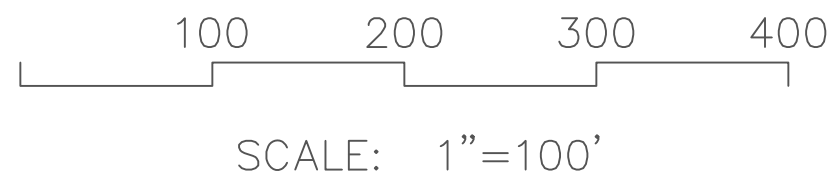


REVISIONS

AKA CIVIL ENGINEERING  
 597 DW BROOKS DRIVE  
 ATHENS, GA 30602  
 912-230-7334 CELL

**SITE DESIGN WITH AQUATIC CENTER**  
**LAKES AT GREEN VALLEY INDUSTRIAL PARK**  
**SPALDING COUNTY, GA**  
 PREPARED FOR:  
**GRIFFIN-SPALDING DEVELOPMENT AUTHORITY**

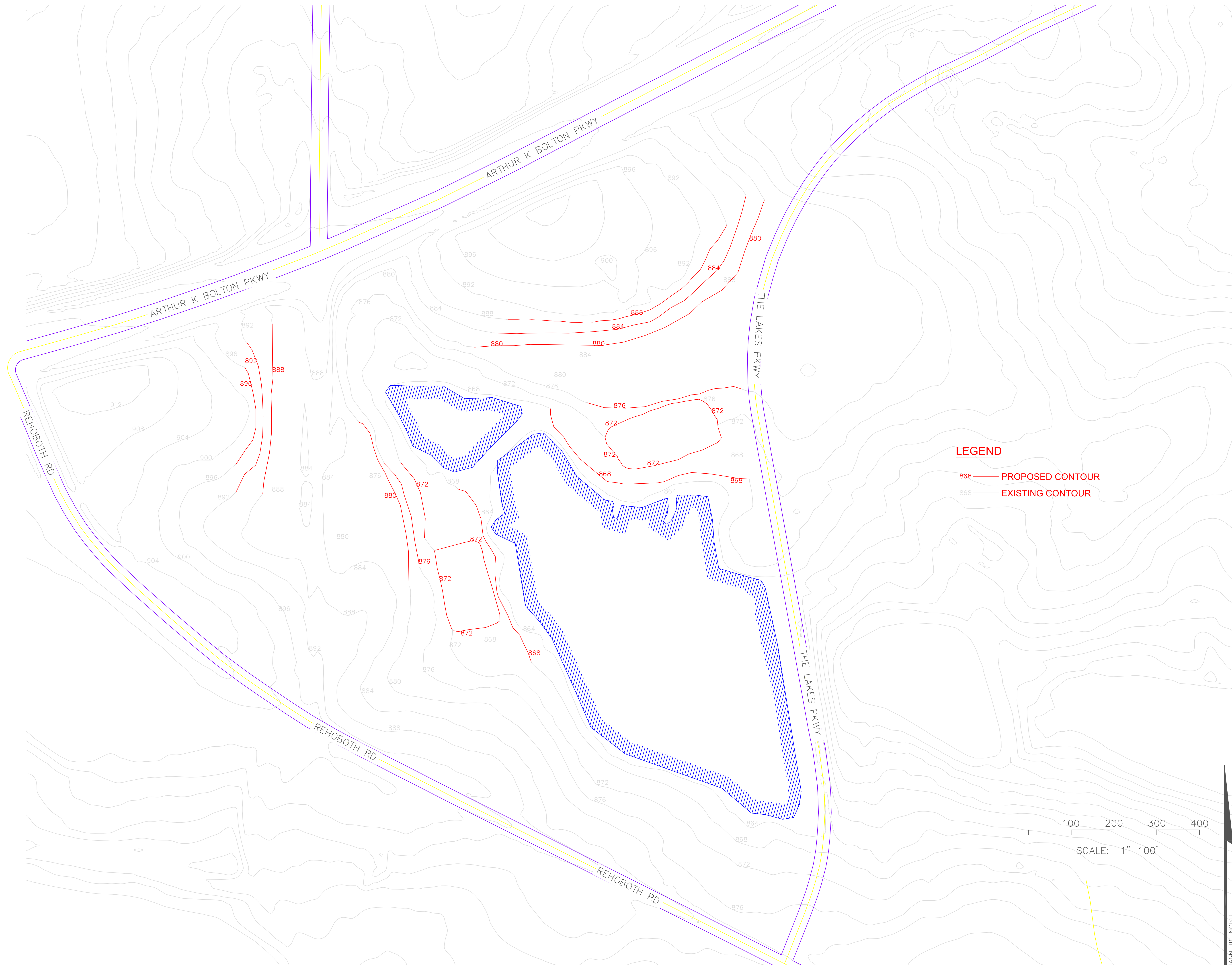
DATE: 2018-04-09  
 DRAWN BY: XXX  
 CHECKED BY: XXX  
 SCALE: 1"=100' (FOR 24"x36")



MAGNETIC NORTH

**G4**

SHEET:



REVISIONS

AKA CIVIL ENGINEERING  
 597 DW BROOKS DRIVE  
 ATHENS, GA 30602  
 912-230-7334 CELL

**GRADING PLAN**  
**LAKES AT GREEN VALLEY INDUSTRIAL PARK**  
**SPALDING COUNTY, GA**  
 PREPARED FOR:  
**GRIFFIN-SPALDING DEVELOPMENT AUTHORITY**

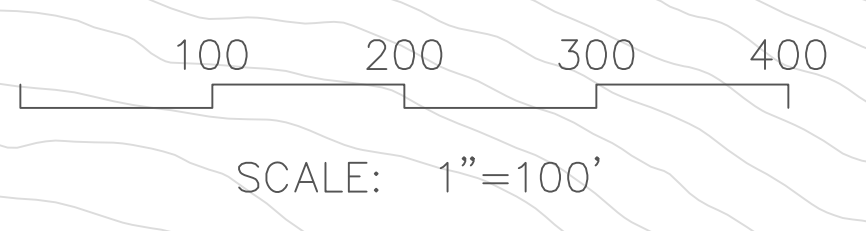
DATE: 2018-04-09  
 DRAWN BY: XXX  
 CHECKED BY: XXX  
 SCALE: 1"=100' (FOR 24"x36")

**C1**

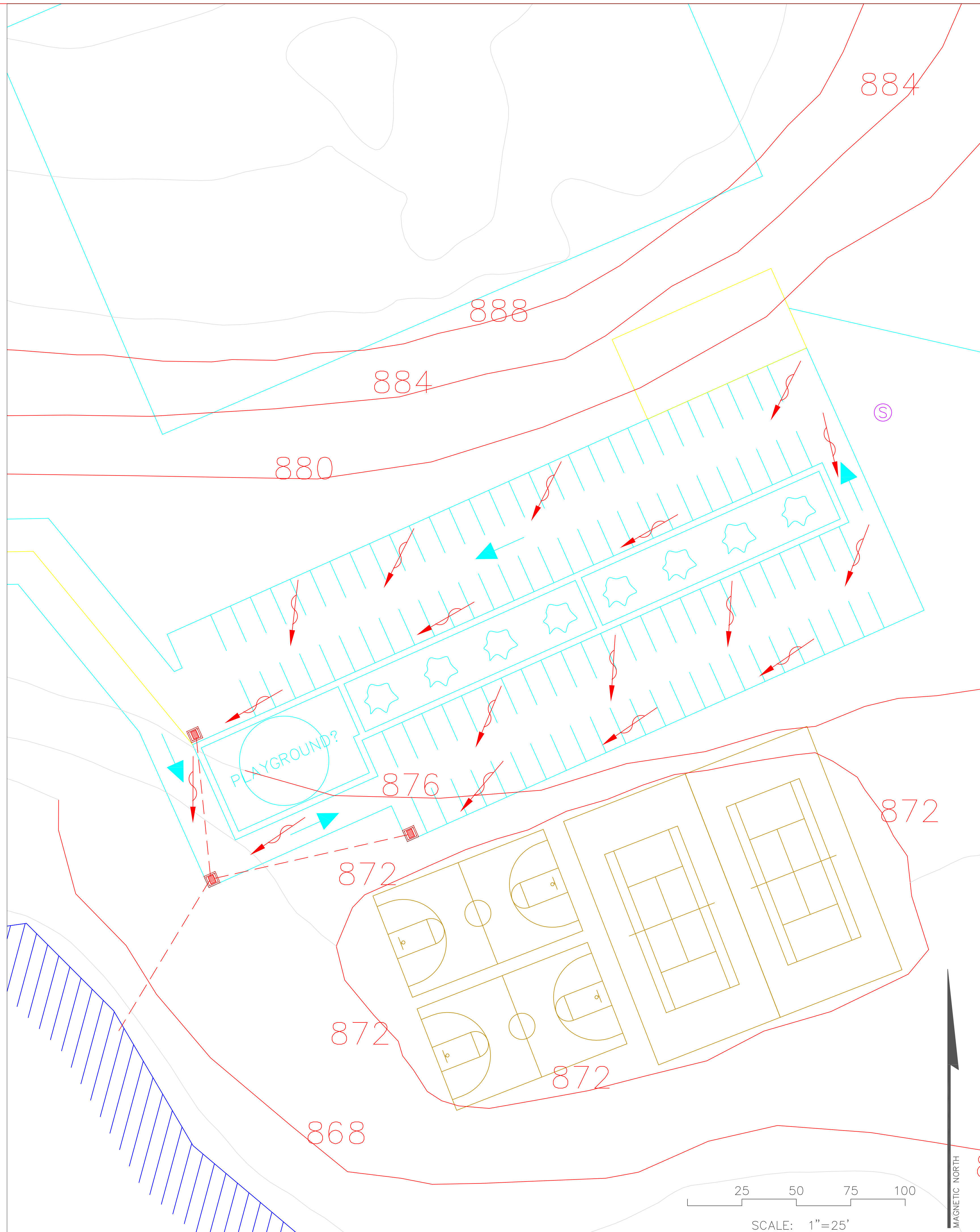
SHEET:

**LEGEND**

- 868 — PROPOSED CONTOUR
- 868 — EXISTING CONTOUR



MAGNETIC NORTH



REVISIONS

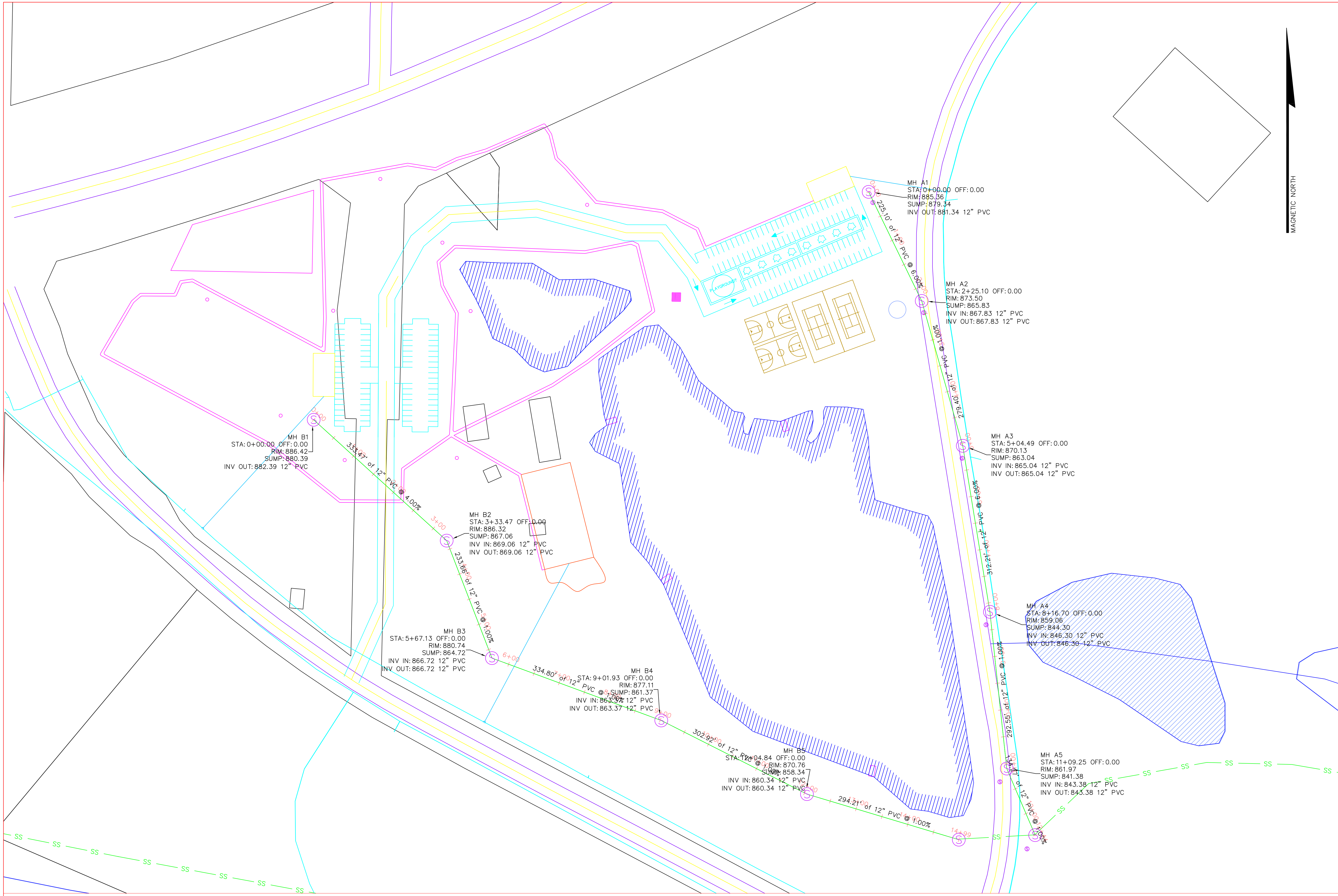
AKA CIVIL ENGINEERING  
597 DW BROOKS DRIVE  
ATHENS, GA 30602  
912-230-7334 CELL

**STORM WATER MANAGEMENT PLAN**  
**LAKES AT GREEN VALLEY INDUSTRIAL PARK**  
**SPALDING COUNTY, GA**  
PREPARED FOR:  
GRIFFIN-SPALDING DEVELOPMENT AUTHORITY

DATE: 2018-04-09  
DRAWN BY: XXX  
CHECKED BY: XXX  
SCALE: 1"=25' (FOR 24"x36")

**C2**

SHEET:



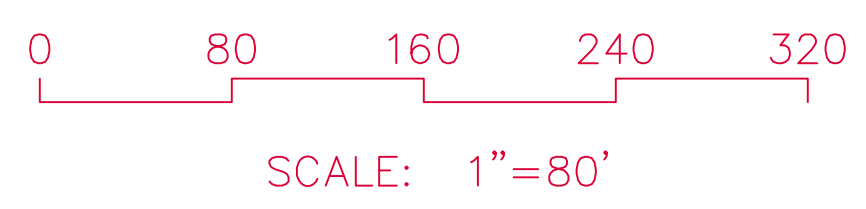
MAGNETIC NORTH

REVISIONS	

AKA CIVIL ENGINEERING  
597 DW BROOKS DRIVE  
ATHENS, GA 30602  
912-230-7334 CELL

**PROPOSED SEWER AND WATER PLAN**  
**LAKES AT GREEN VALLEY INDUSTRIAL PARK**  
**SPALDING COUNTY, GA**  
PREPARED FOR:  
GRIFFIN-SPALDING DEVELOPMENT AUTHORITY

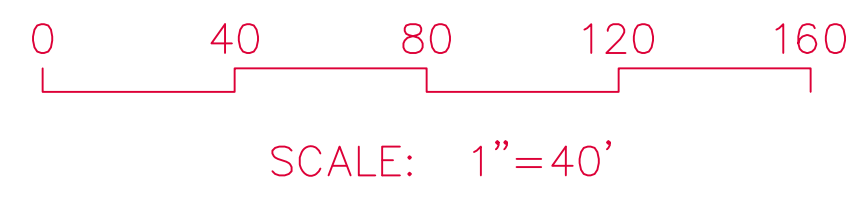
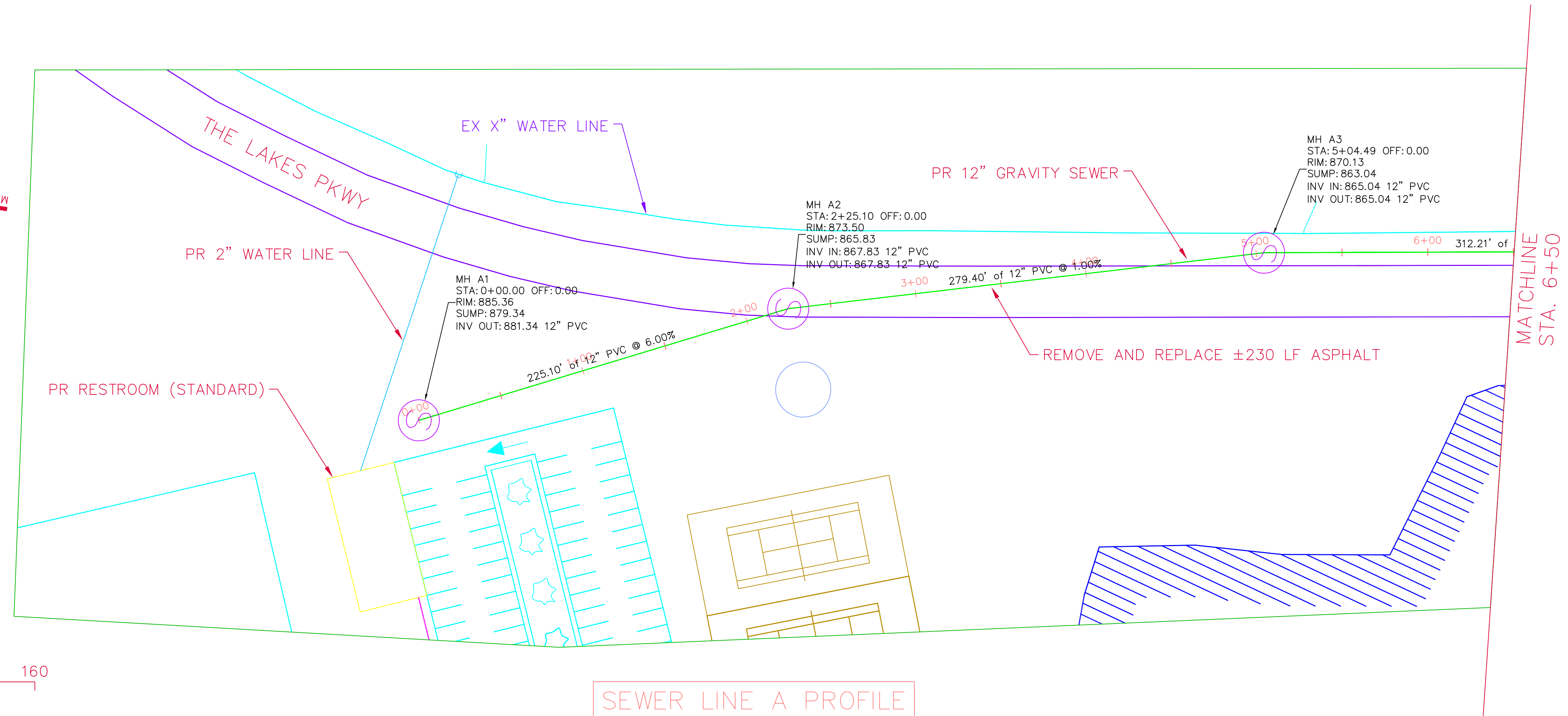
DATE: 2018-04-09  
DRAWN BY: AJH  
CHECKED BY: AJH  
SCALE: 1"=80' (FOR 24"x36")



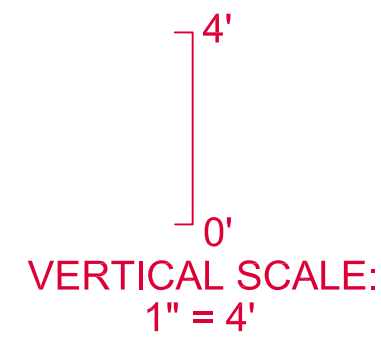
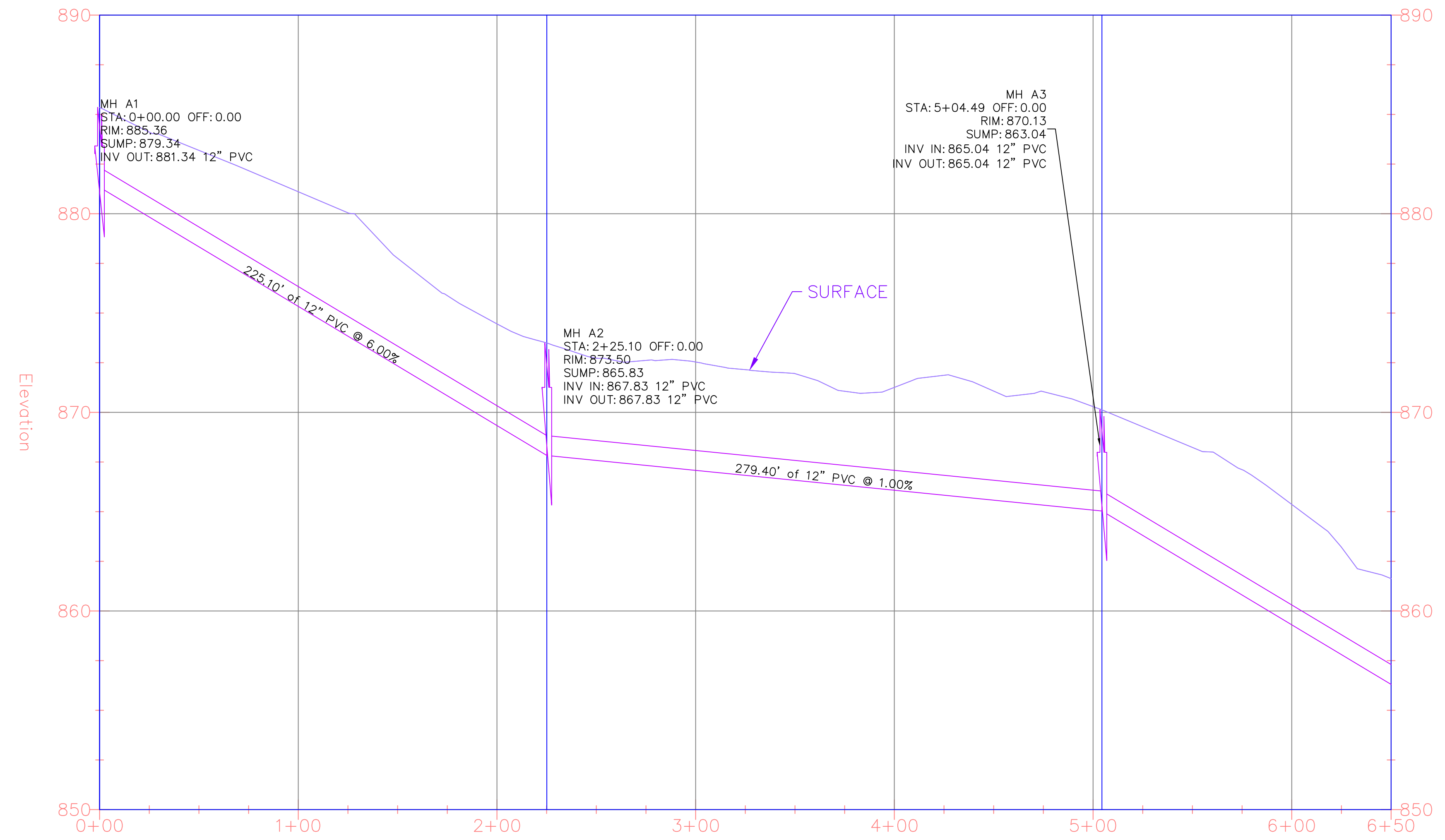
**C3-1**

SHEET:





SEWER LINE A PROFILE



NO.	DESCRIPTION

AKA CIVIL ENGINEERING  
597 DW BROOKS DRIVE  
ATHENS, GA 30602  
912-230-7334 CELL

PROPOSED SEWER LINE A PLAN

LAKES AT GREEN VALLEY INDUSTRIAL PARK  
SPALDING COUNTY, GA

PREPARED FOR:  
GRIFFIN-SPALDING DEVELOPMENT AUTHORITY

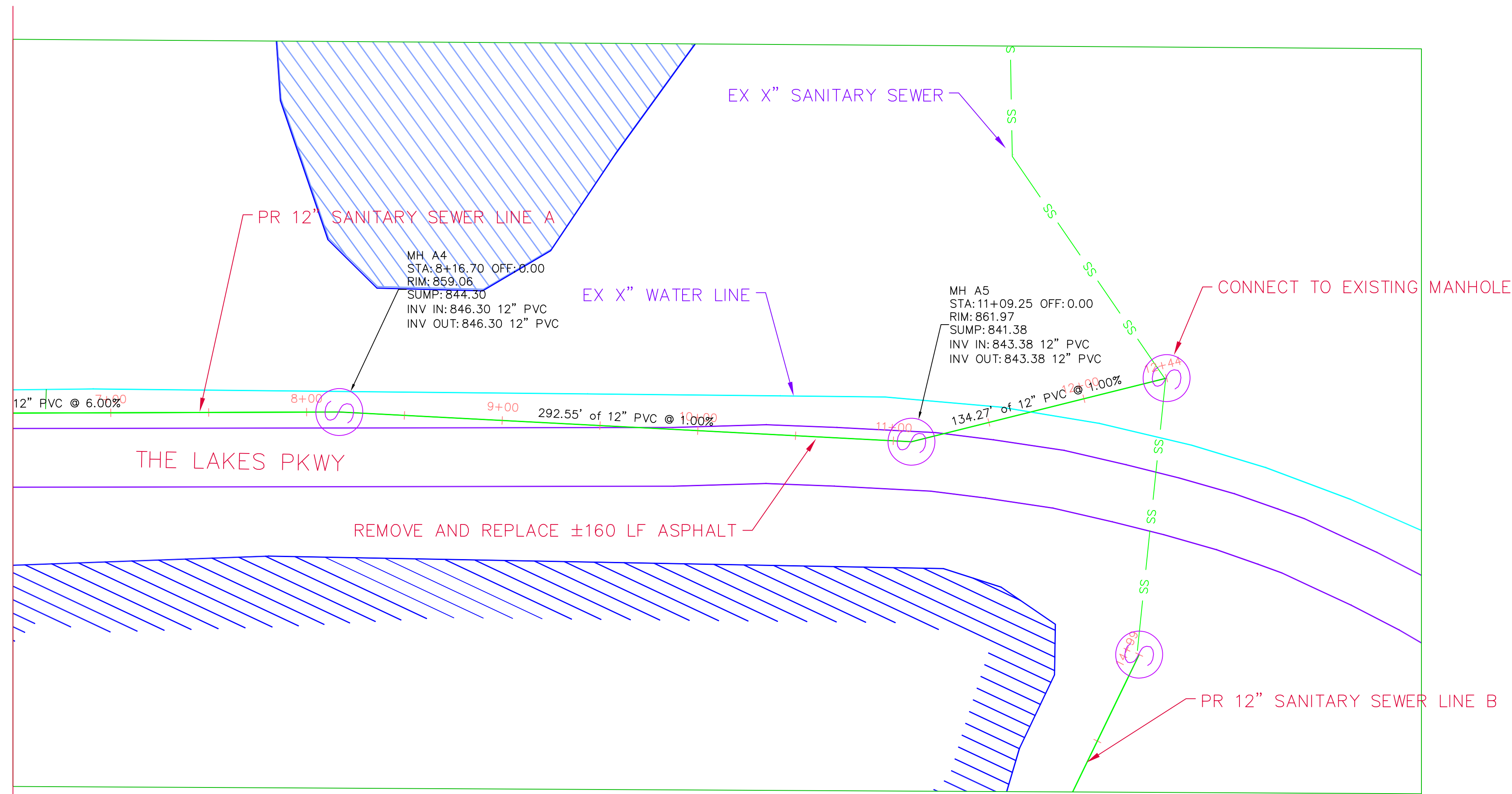
DATE: 2018-04-09  
DRAWN BY: XXX  
CHECKED BY: XXX  
SCALE: 1"=40' (FOR 24"x36")

C3-2

SHEET:

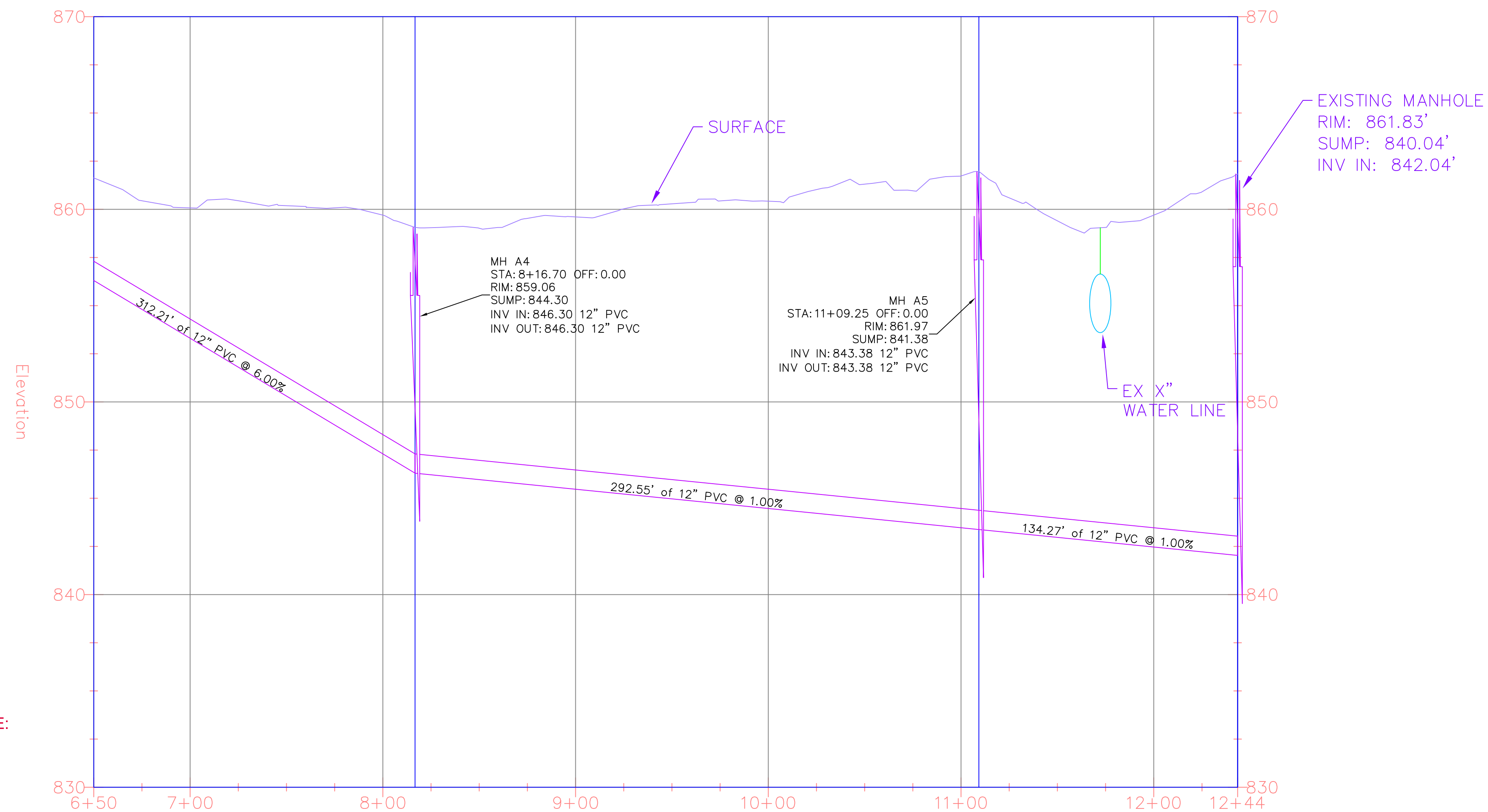


MATCHLINE  
STA. 6+50



SCALE: 1"=40'

SEWER LINE A PROFILE



VERTICAL SCALE:  
1" = 4'

NO.	DESCRIPTION

AKA CIVIL ENGINEERING  
597 DW BROOKS DRIVE  
ATHENS, GA 30602  
912-230-7334 CELL

PROPOSED SEWER LINE A PLAN

LAKES AT GREEN VALLEY INDUSTRIAL PARK  
SPALDING COUNTY, GA

PREPARED FOR:  
GRIFFIN-SPALDING DEVELOPMENT AUTHORITY

DATE: 2018-04-09

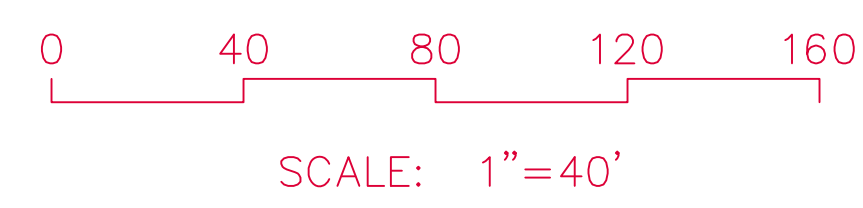
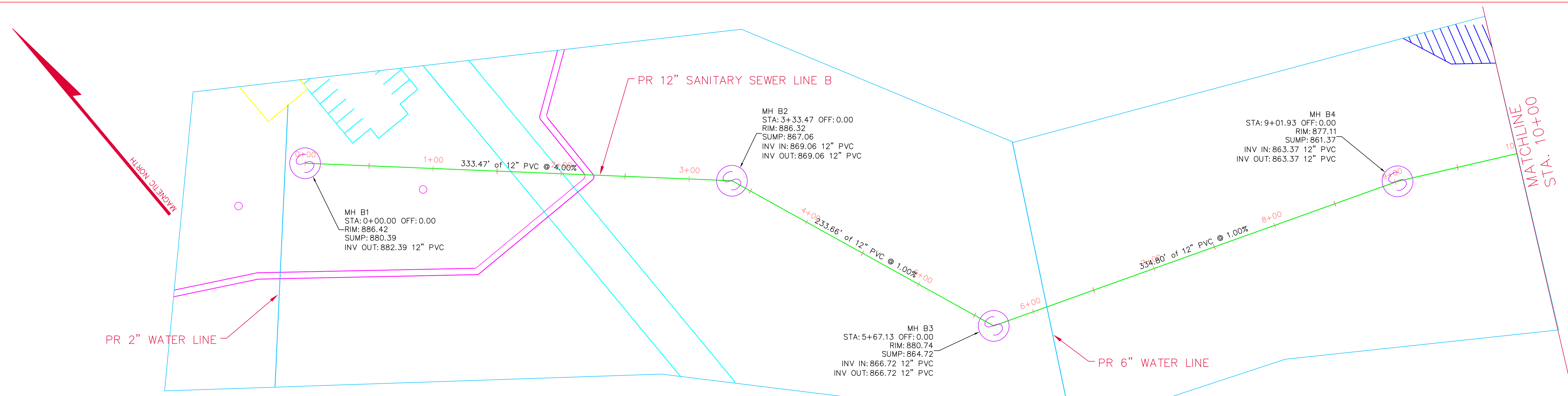
DRAWN BY: XXX

CHECKED BY: XXX

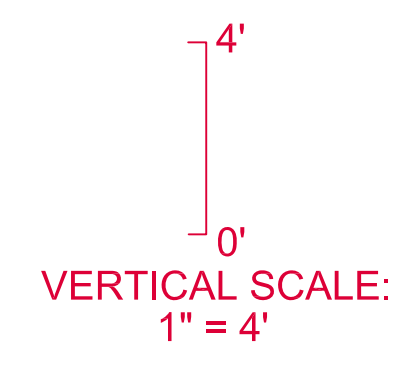
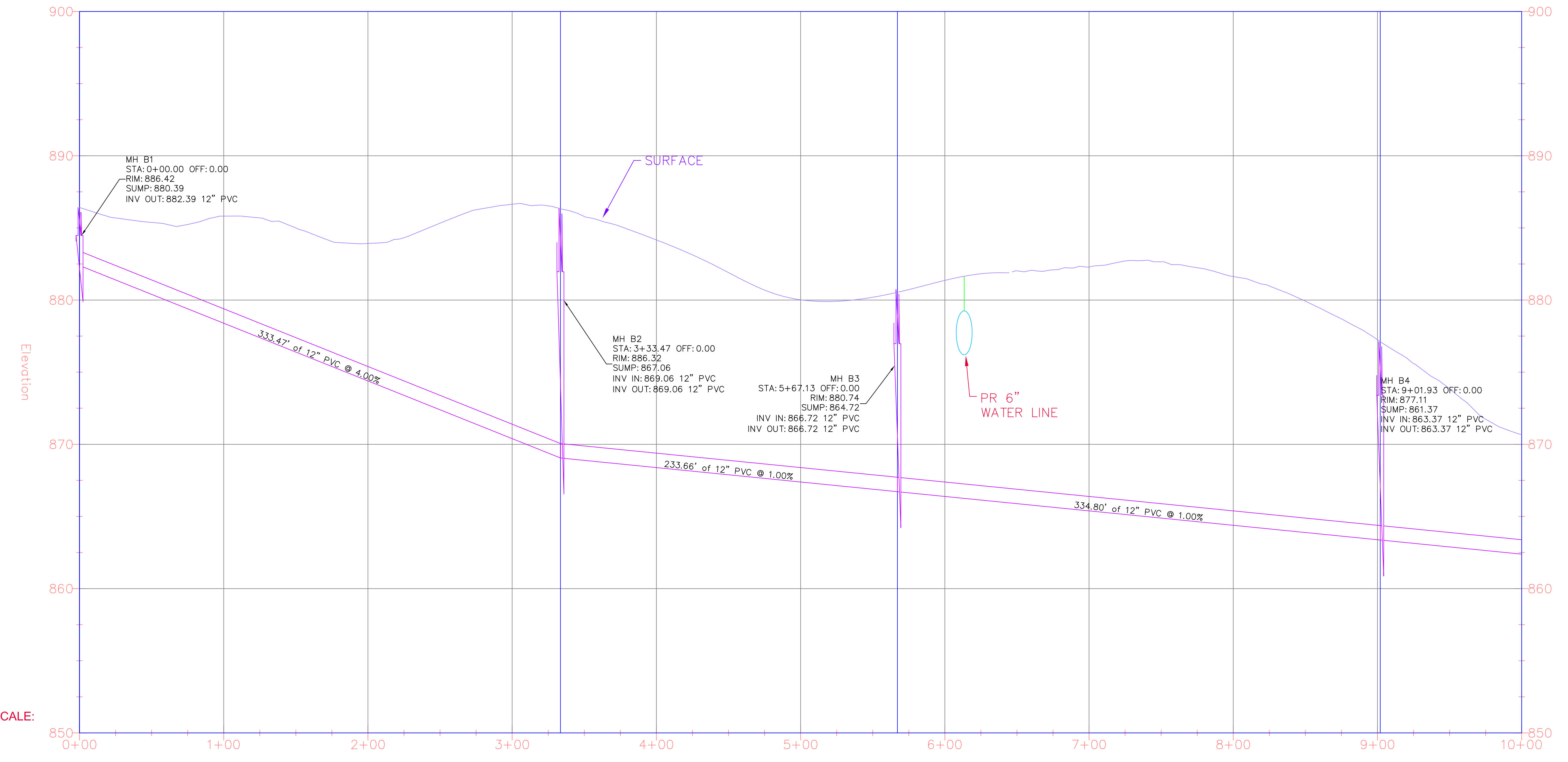
SCALE: 1"=40' (FOR 24"x36")

**C3-3**

SHEET:



SEWER LINE B PROFILE



REVISIONS

AKA CIVIL ENGINEERING  
597 DW BROOKS DRIVE  
ATHENS, GA 30602  
912-230-7334 CELL

PROPOSED SEWER LINE B PLAN

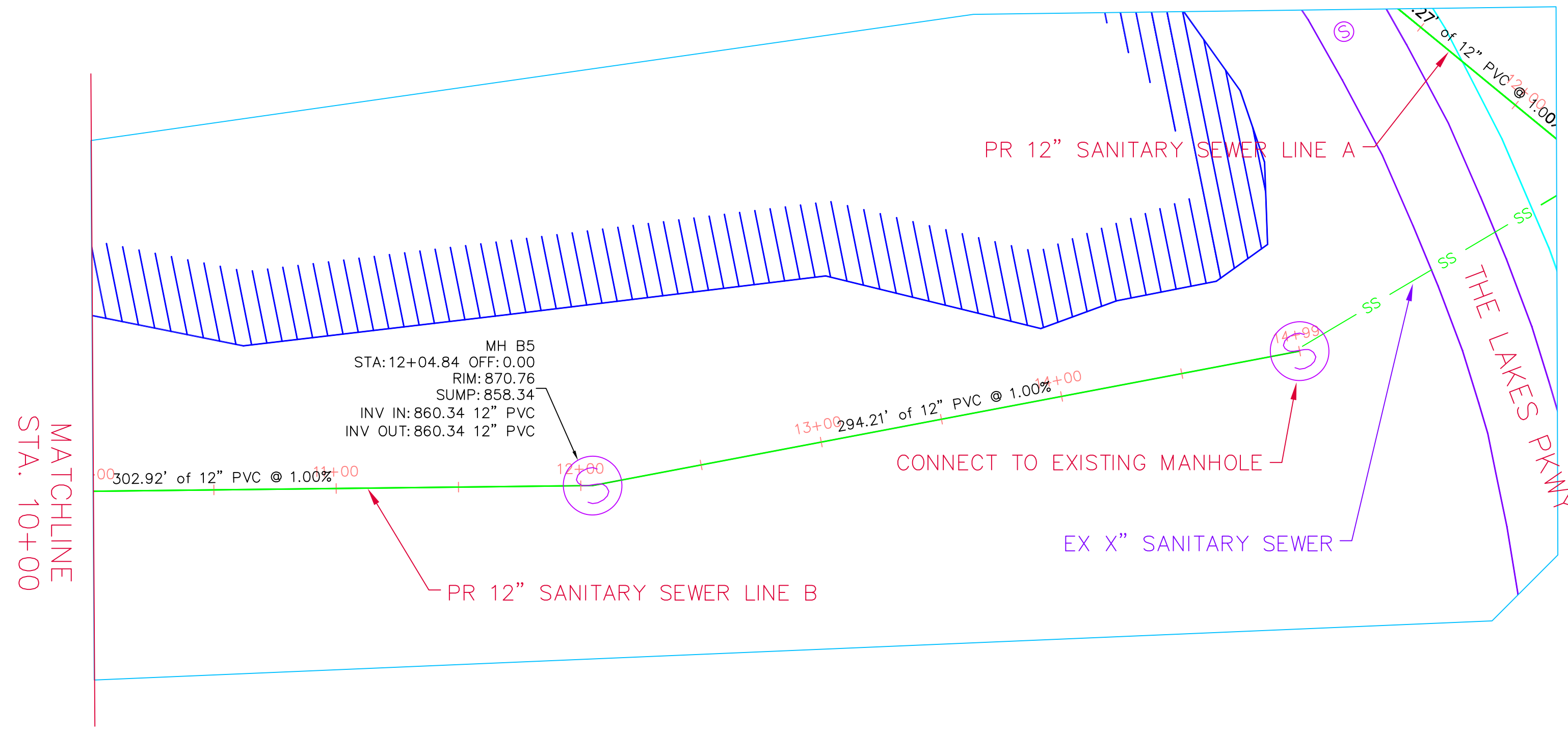
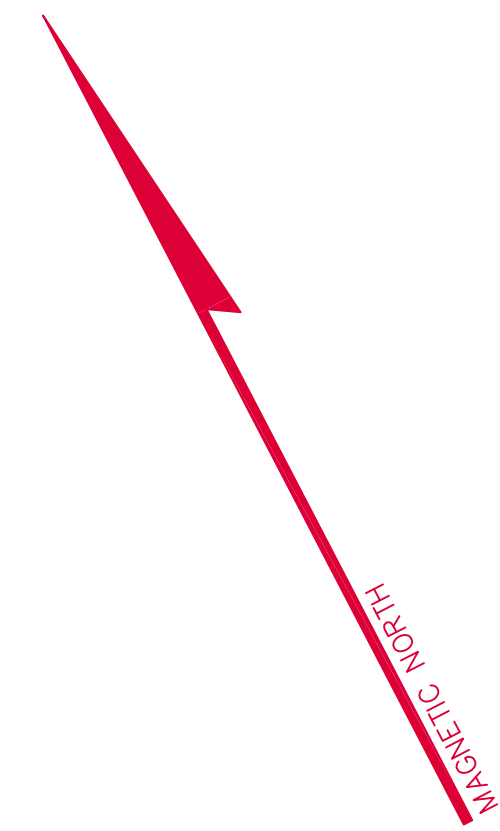
LAKES AT GREEN VALLEY INDUSTRIAL PARK  
SPALDING COUNTY, GA

PREPARED FOR:  
GRIFFIN-SPALDING DEVELOPMENT AUTHORITY

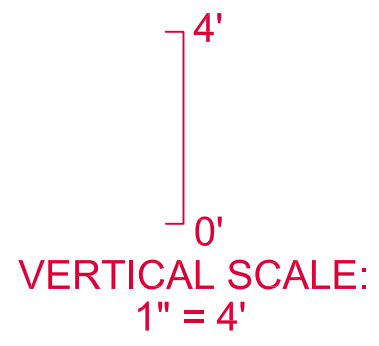
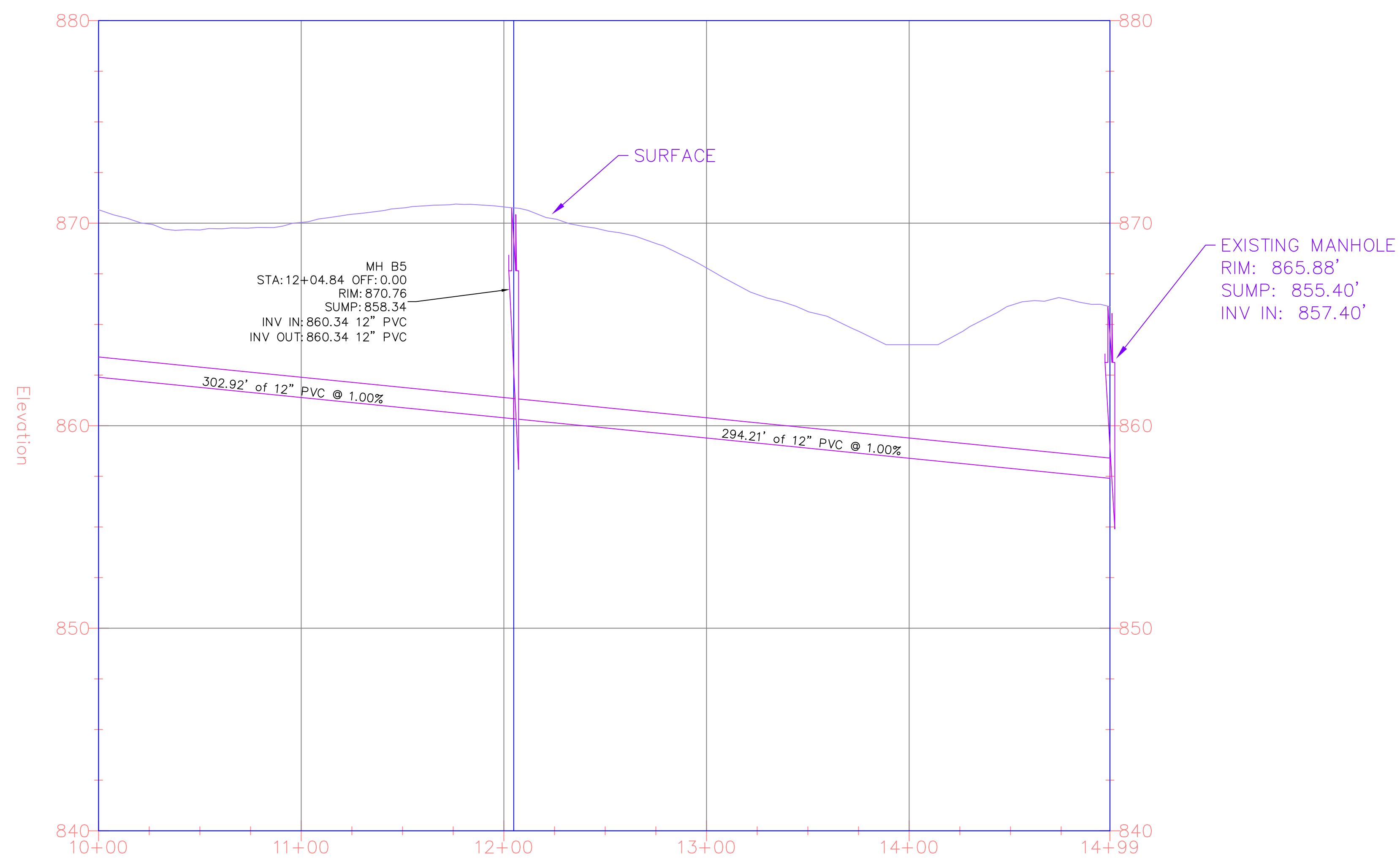
DATE: 2018-04-09  
DRAWN BY: XXX  
CHECKED BY: XXX  
SCALE: 1"=40' (FOR 24"x36")

C3-4

SHEET:



SEWER LINE B PROFILE



REVISIONS	

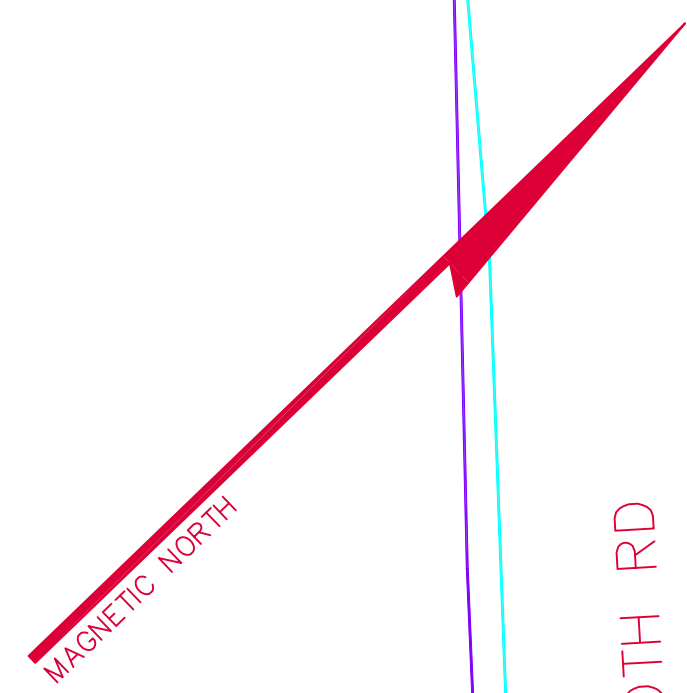
AKA CIVIL ENGINEERING  
597 DW BROOKS DRIVE  
ATHENS, GA 30602  
912-230-7334 CELL

**PROPOSED SEWER LINE B PLAN**  
**LAKES AT GREEN VALLEY INDUSTRIAL PARK**  
**SPALDING COUNTY, GA**  
PREPARED FOR:  
GRIFFIN-SPALDING DEVELOPMENT AUTHORITY

DATE: 2018-04-09  
DRAWN BY: XXX  
CHECKED BY: XXX  
SCALE: 1"=40' (FOR 24"x36")

**C3-5**

SHEET:



REHOBOTH RD

EX X" WATER LINE

PR 2" TEE CONNECTING TO EXISTING X" WATER LINE

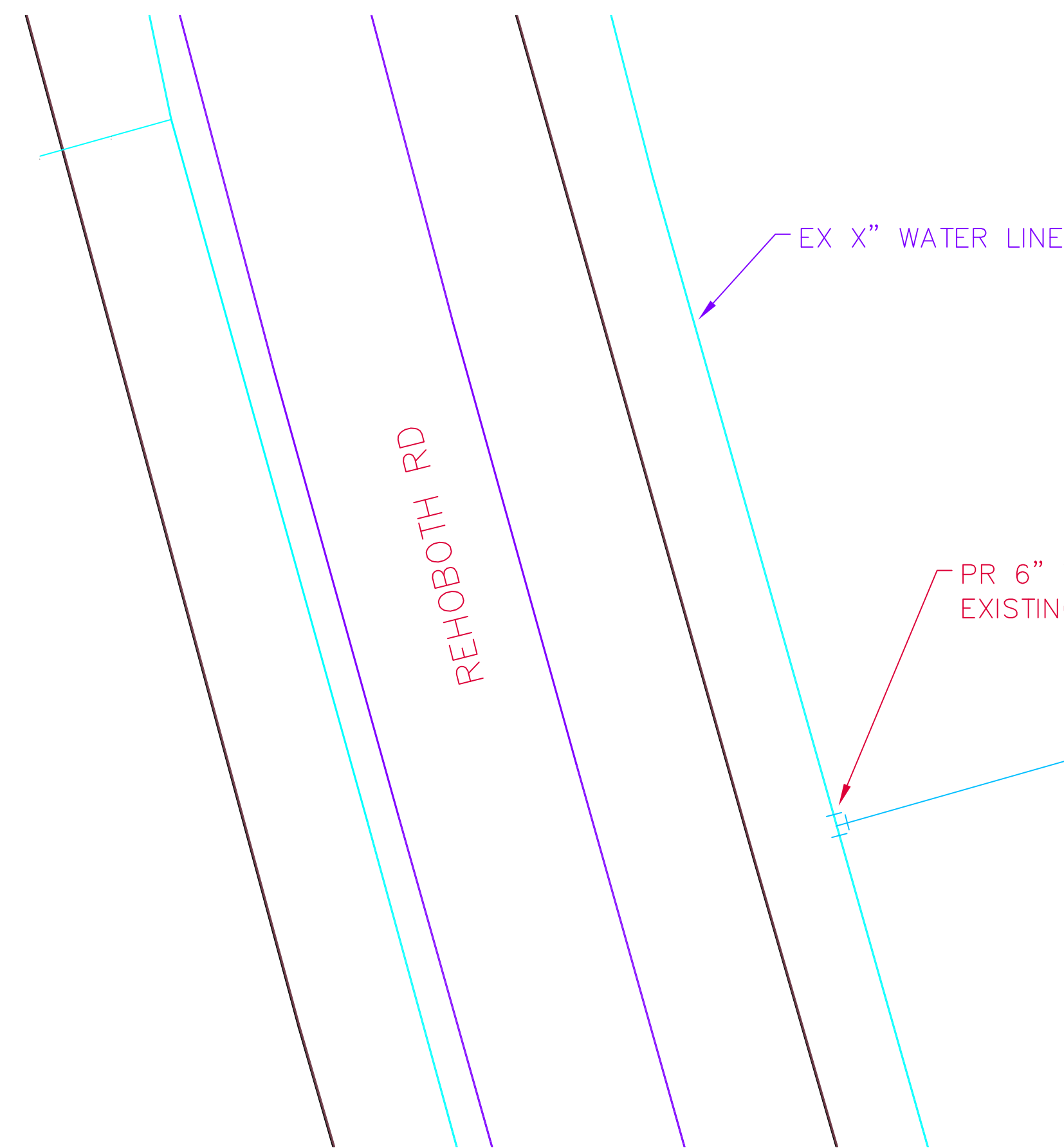
PR 2" WATER LINE

PR RESTROOM FACILITY

PR 12" SANITARY SEWER LINE B



SCALE: 1"=20'



EX X" WATER LINE

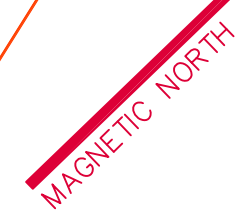
PR 6" TEE CONNECTING TO EXISTING X" WATER LINE

PR 6" WATER LINE

PR 12" SANITARY SEWER LINE B



SCALE: 1"=20'



PR AQUATIC CENTER W/ SPLASH PAD

REVISIONS	

AKA CIVIL ENGINEERING  
597 DW BROOKS DRIVE  
ATHENS, GA 30602  
912-230-7334 CELL

PROPOSED WATER LINE PLAN

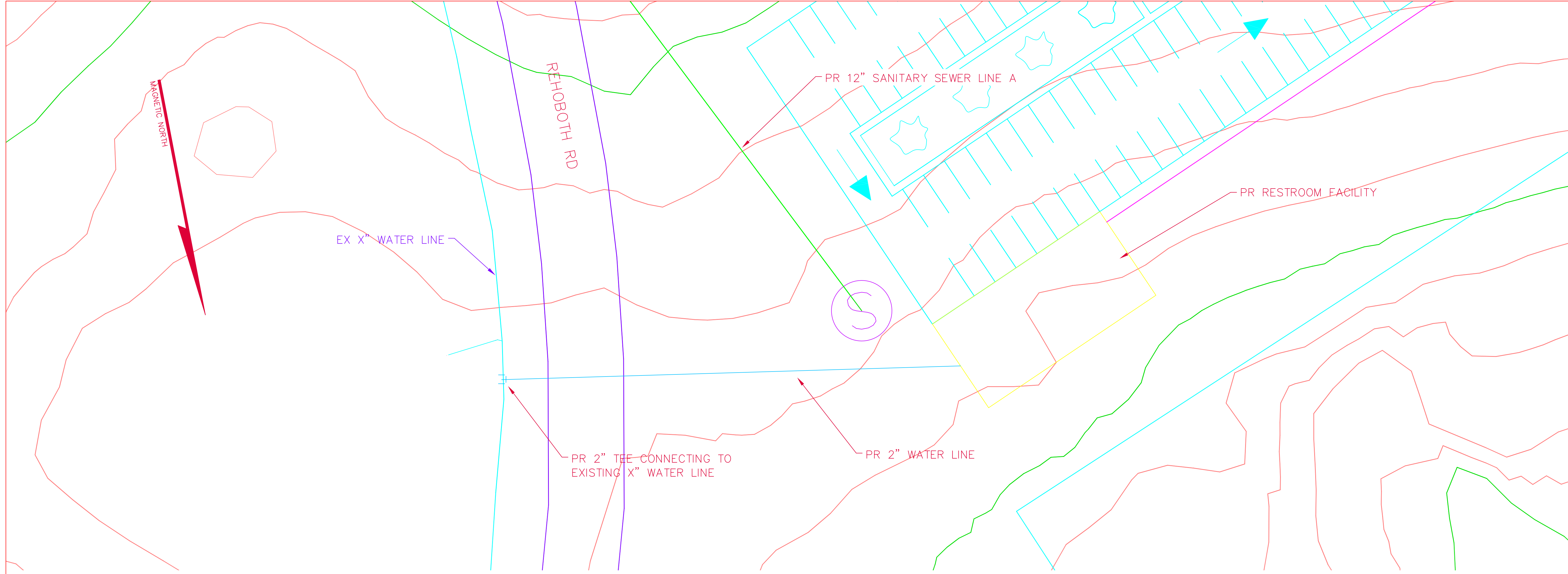
LAKES AT GREEN VALLEY INDUSTRIAL PARK  
SPALDING COUNTY, GA

PREPARED FOR:  
GRIFFIN-SPALDING DEVELOPMENT AUTHORITY

DATE: 2018-04-09  
DRAWN BY: XXX  
CHECKED BY: XXX  
SCALE: 1"=20' (FOR 24"x36")

C4-1

SHEET:



REVISIONS

AKA CIVIL ENGINEERING  
597 DW BROOKS DRIVE  
ATHENS, GA 30602  
912-230-7334 CELL

**PROPOSED WATER LINE PLAN**

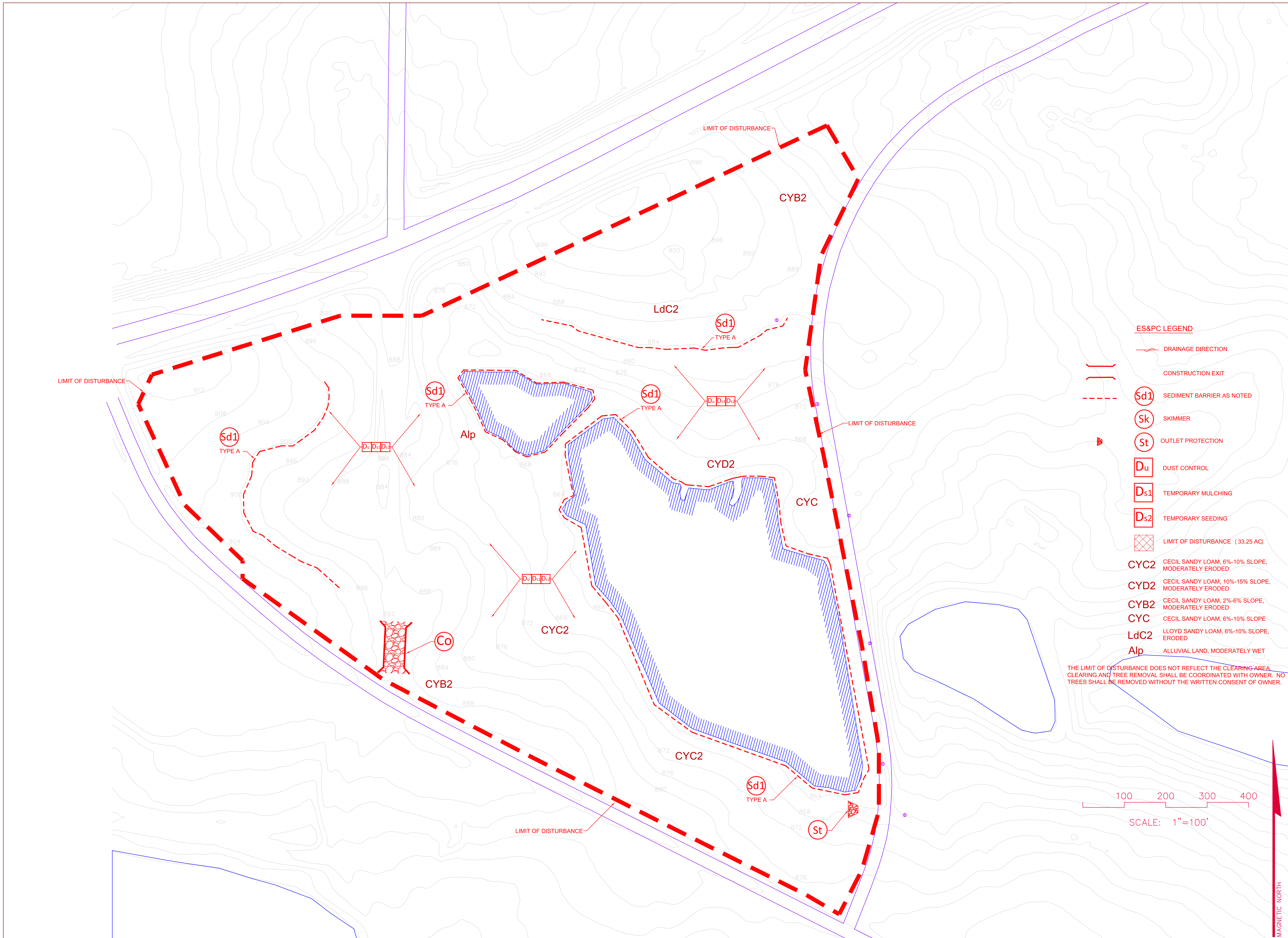
**LAKES AT GREEN VALLEY INDUSTRIAL PARK  
SPALDING COUNTY, GA**

PREPARED FOR:  
GRIFFIN-SPALDING DEVELOPMENT AUTHORITY

DATE: 2018-04-09  
DRAWN BY: XXX  
CHECKED BY: XXX  
SCALE: 1"=20' (FOR 24"x36")

**C4-2**

SHEET:



- ES&PC LEGEND**
- DRAINAGE DIRECTION
  - CONSTRUCTION EXIT
  - SEDIMENT BARRIER AS NOTED
  - SKIMMER
  - OUTLET PROTECTION
  - DUST CONTROL
  - TEMPORARY MULCHING
  - TEMPORARY SEEDING
  - LIMIT OF DISTURBANCE (33.25 AC)
  - CYC2** CECIL SANDY LOAM, 6%-10% SLOPE, MODERATELY ERODED
  - CYD2** CECIL SANDY LOAM, 10%-15% SLOPE, MODERATELY ERODED
  - CYB2** CECIL SANDY LOAM, 2%-6% SLOPE, MODERATELY ERODED
  - CYC** CECIL SANDY LOAM, 6%-10% SLOPE, ERODED
  - LdC2** LLOYD SANDY LOAM, 6%-10% SLOPE, ERODED
  - Alp** ALLUVIAL LAND, MODERATELY WET
- THE LIMIT OF DISTURBANCE DOES NOT REFLECT THE CLEARING AREA. CLEARING AND TREE REMOVAL SHALL BE COORDINATED WITH OWNER. NO TREES SHALL BE REMOVED WITHOUT THE WRITTEN CONSENT OF OWNER.

REVISIONS

AKA CIVIL ENGINEERING  
597 DW BROOKS DRIVE  
ATHENS, GA 30602  
912-230-7334 CELL

**EROSION SEDIMENT & POLLUTION CONTROL PLAN**  
**LAKES AT GREEN VALLEY INDUSTRIAL PARK**  
**SPALDING COUNTY, GA**  
PREPARED FOR:  
GRIFFIN-SPALDING DEVELOPMENT AUTHORITY

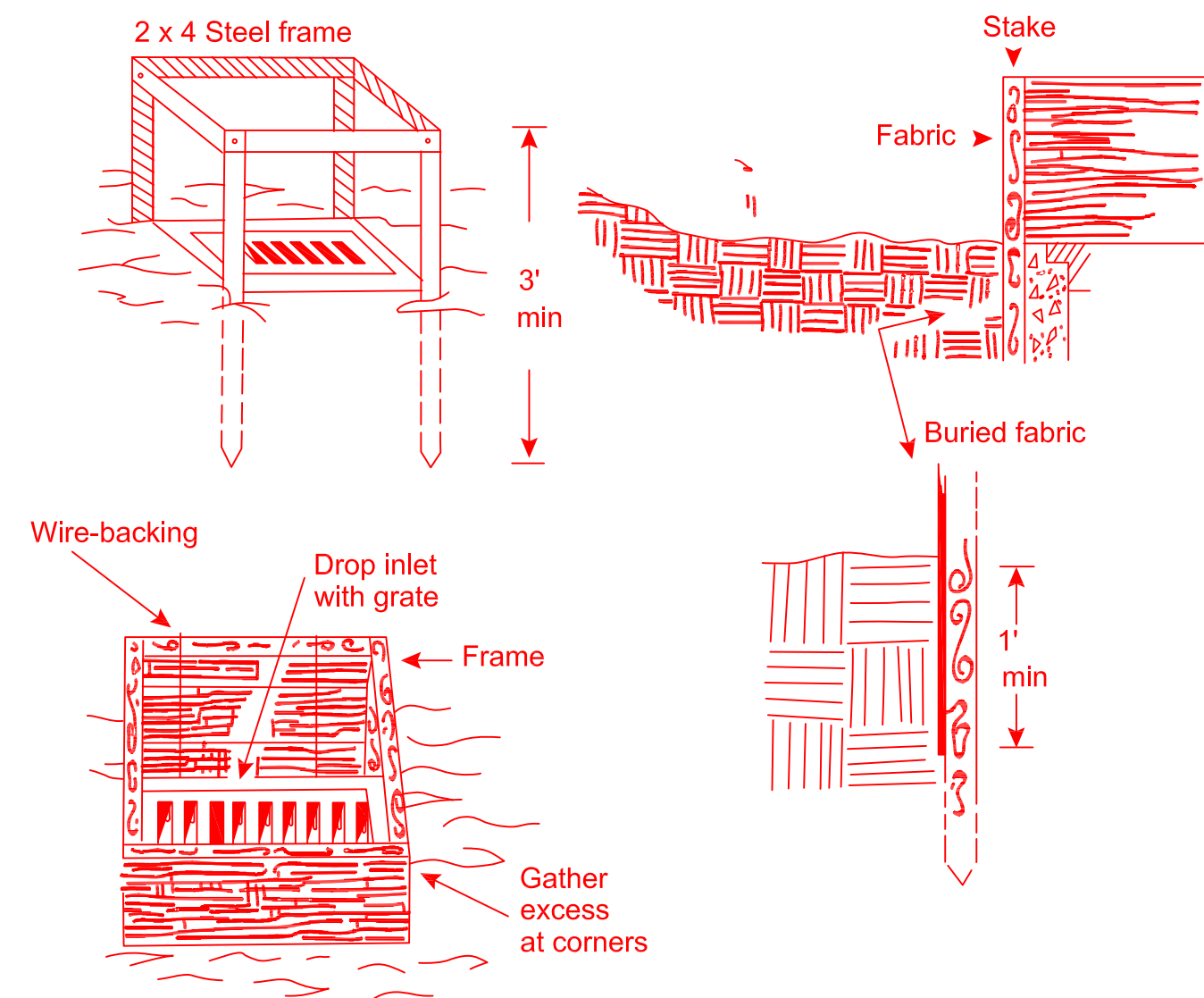
DATE: 2018-04-09  
DRAWN BY: XXX  
CHECKED BY: XXX  
SCALE: 1"=100' (FOR 24"x36")

MAGNETIC NORTH

**E1**

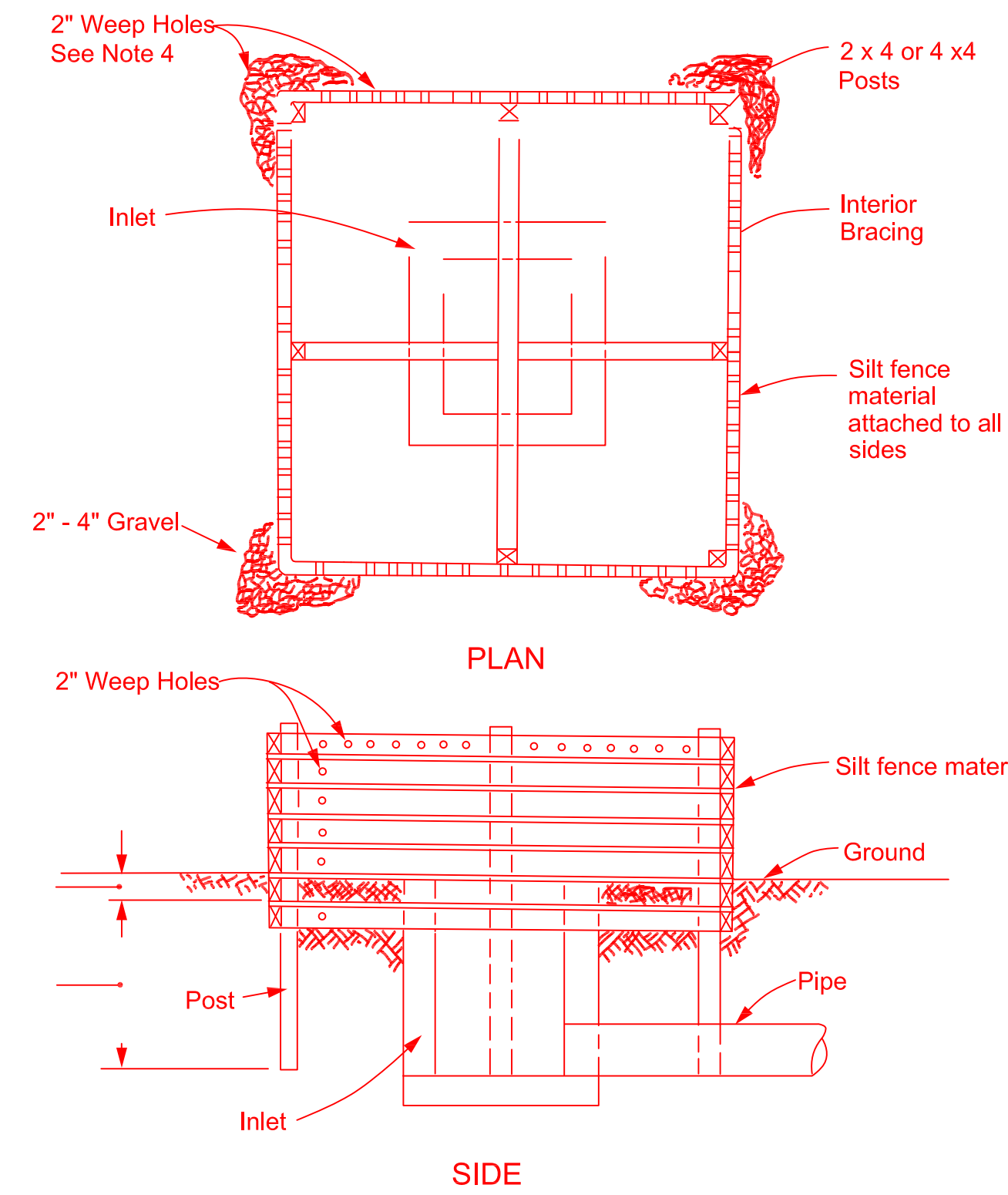
SHEET:

Sd2



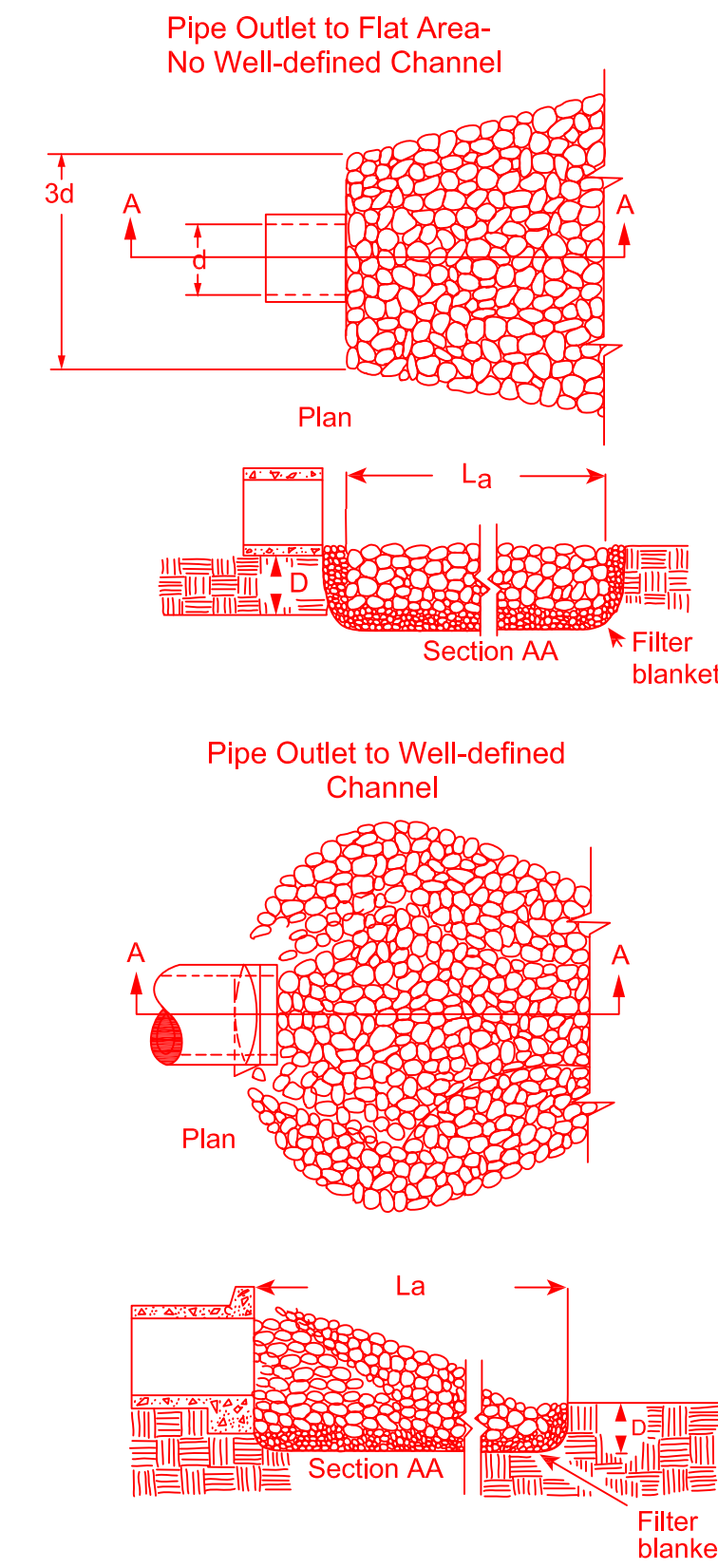
**INLET SEDIMENT TRAP FABRIC AND FRAME NTS**

Sd2



**INLET SEDIMENT TRAP NTS**

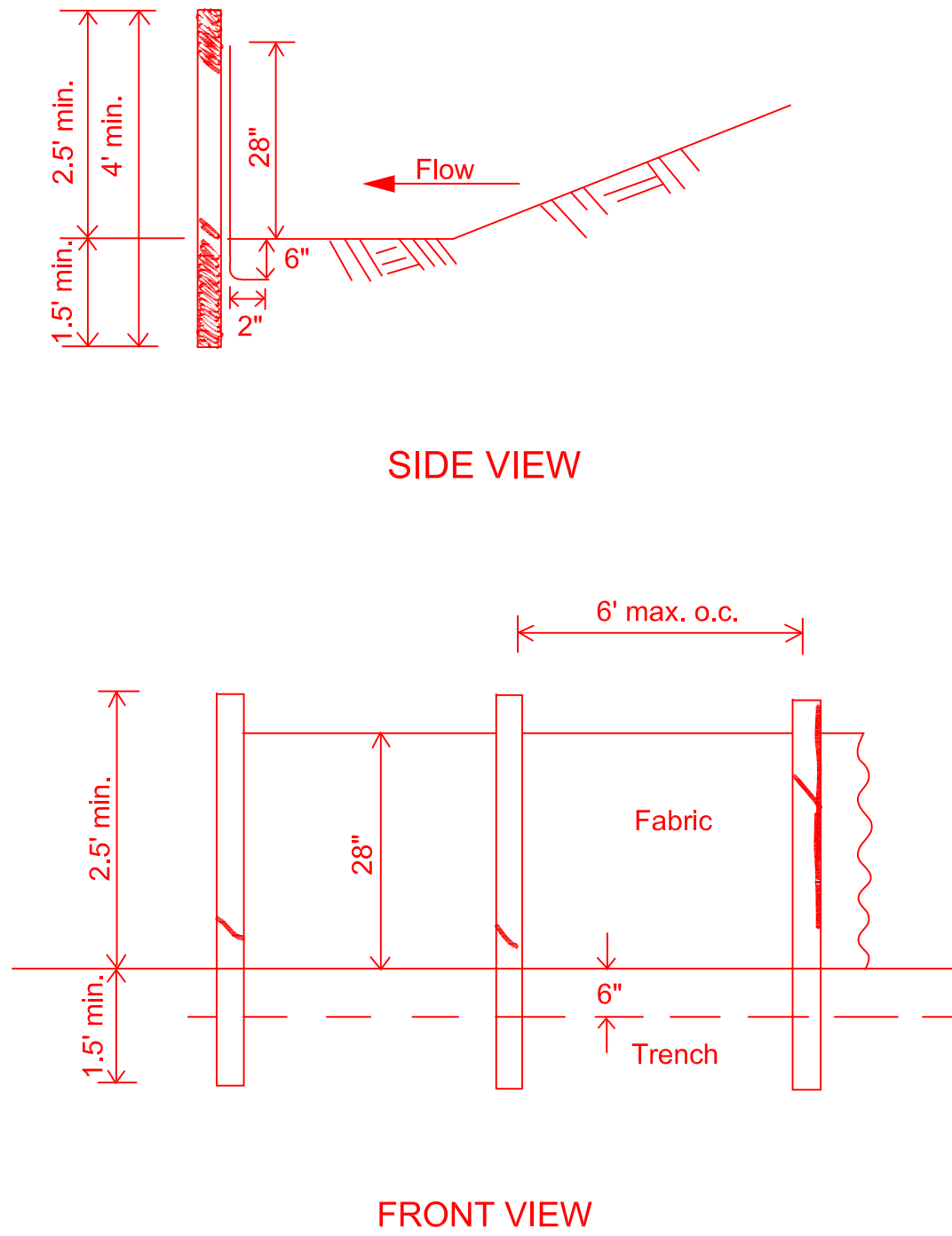
St



- Notes
1.  $L_a$  is the length of the riprap apron.
  2.  $D = 1.5$  times the maximum stone diameter but not less than 6".
  3. In a well-defined channel extend the apron up the channel banks to an elevation of 6" above the maximum tailwater depth or to the top of the bank, whichever is less.
  4. A filter blanket or filter fabric should be installed between the riprap and soil foundation.

**RIP RAP OUTLET PROTECTION NTS**

Sd1



NOTE:  
Use 36" D.O.T. approved fabric.  
Use wood or steel posts

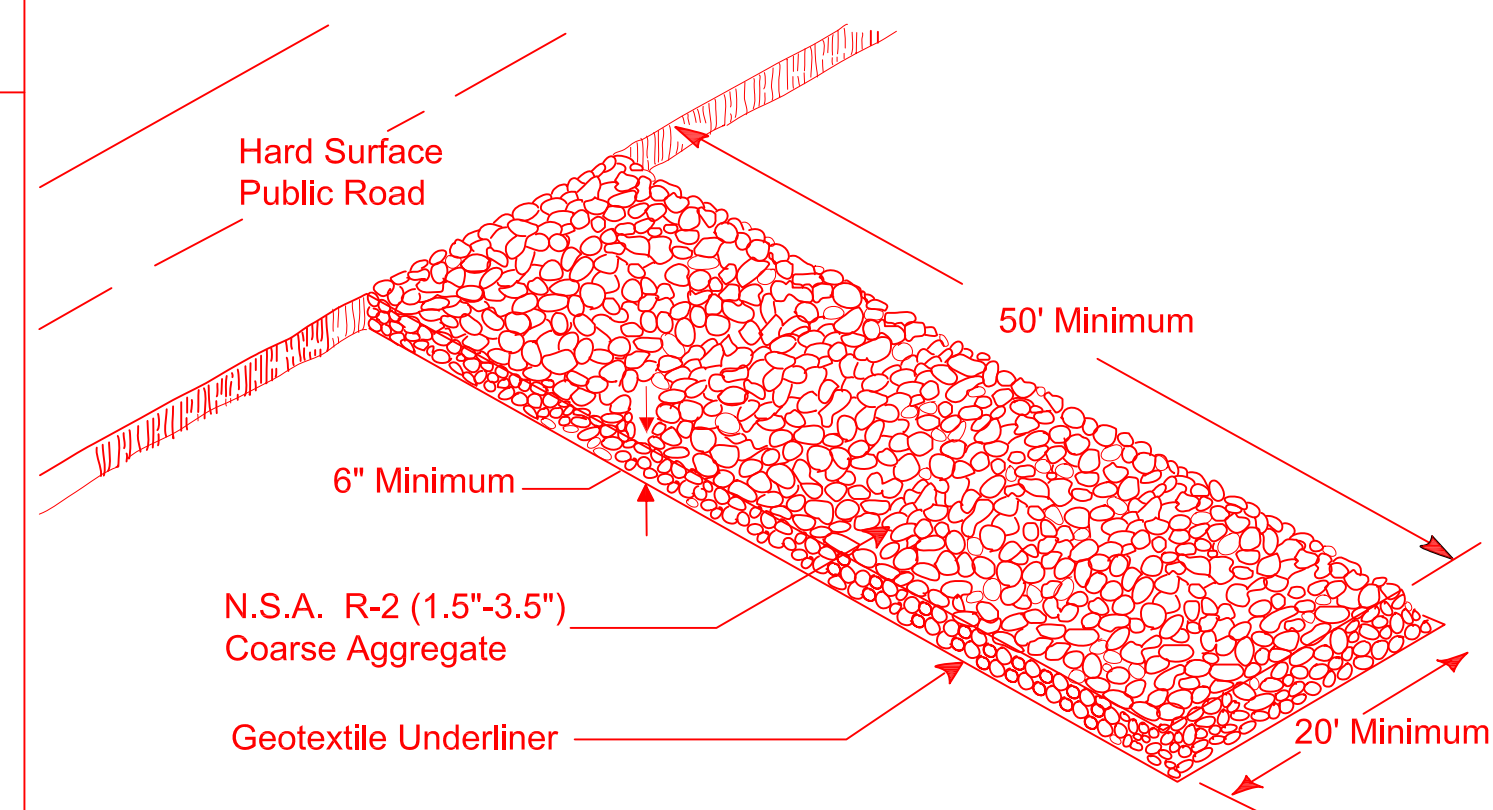
**SILT FENCE - TYPE A NTS**

09/15/14 TO 09/15/15

ACTIVITY	MONTH											
	1	2	3	4	5	6	7	8	9	10	11	12
INSTALL CONSTRUCTION EXIT & SILT FENCE	█											
INSTALL GRADING PHASE EROSION MEASURES	█	█	█	█								
BUILDING PHASE				█	█	█	█	█	█	█	█	█
FINAL LANDSCAPING & FINAL BMP'S											█	█
REMOVAL OF TRAP EROSION MEASURES											█	█
MAINTENANCE OF BMP'S	█	█	█	█	█	█	█	█	█	█	█	█

**CONSTRUCTION TIMELINE**

Co

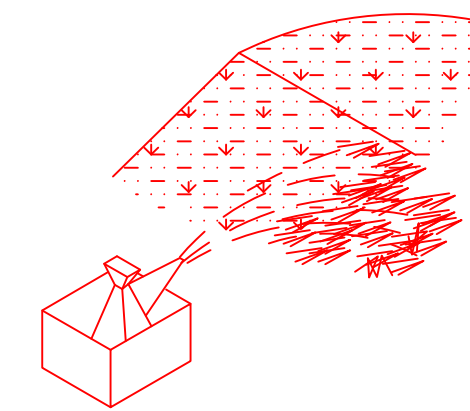


**CRUSHED STONE CONSTRUCTION EXIT NTS**

Ds2

## DISTURBED AREA STABILIZATION (WITH TEMPORARY SEEDINGS)

ESTABLISHING A TEMPORARY VEGETATIVE COVER WITH FAST GROWING SEEDINGS.



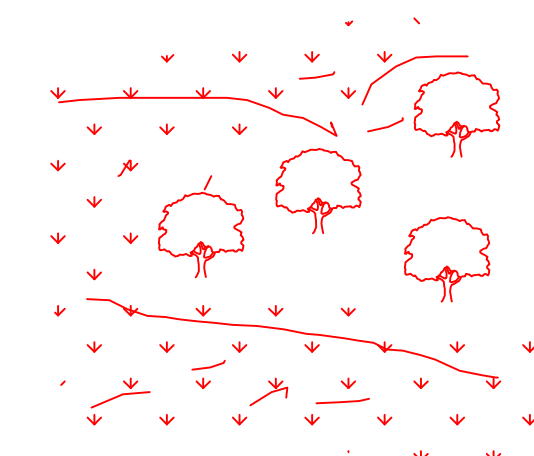
3 12 MONTHS OR UNTIL ESTABLISHMENT OF FINISHED GRADE OR PERMANENT VEGETATION.  
SITE PREPARATION:

- \* GRADING AND SHAPING
- \* SEED BED PREPARATION
- \* APPLY LIME AND FERTILIZER
- \* PLANT SEEDING, SELECT SPECIES BY SEASON AND REGION
- \* APPLY MULCHING MATERIAL IF NEEDED
- \* IRRIGATE IF NEEDED, BUT NOT AT RATE TO CAUSE EROSION

Ds3

## DISTURBED AREA STABILIZATION (WITH PERMANENT SEEDINGS)

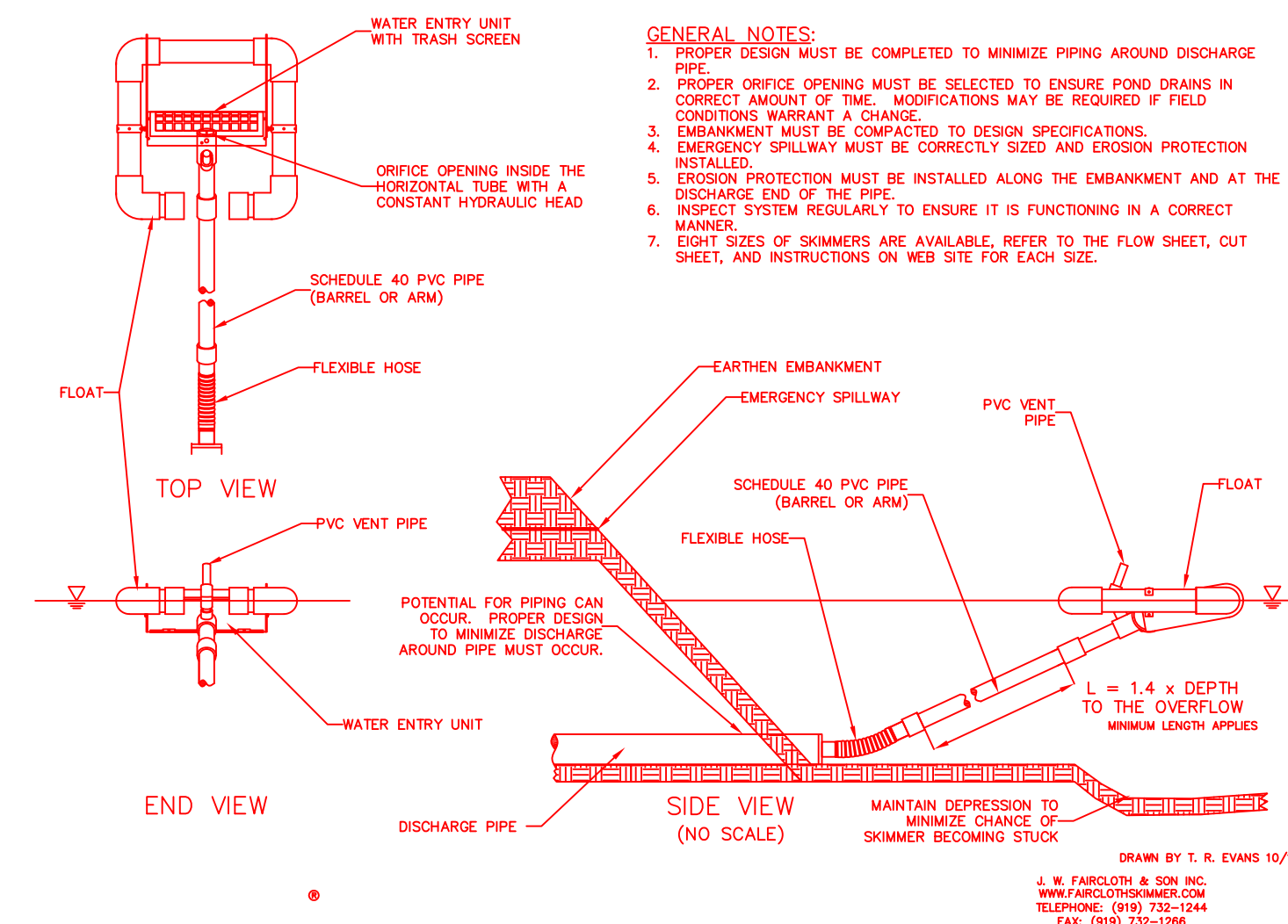
ESTABLISHING A PERMANENT VEGETATIVE COVER WITH FAST GROWING SEEDINGS.



APPLICABLE ON HIGHLY ERODIBLE OR SEVERELY ERODED AREAS, SOMETIMES CALLED "CRITICAL AREAS" INCLUDING:

- \* CUT OR FILL SLOPES
- \* EARTH SPILLWAYS
- \* BORROW AREAS
- \* CHANNEL BANKS
- \* BERMS
- \* ROADSIDES
- \* SPOIL AREAS
- \* GULLIED LANDS

Sk



REVISIONS

AKA CIVIL ENGINEERING  
597 DW BROOKS DRIVE  
ATHENS, GA 30602  
912-230-7334 CELL

EROSION SEDIMENT & POLLUTION CONTROL DETAILS

LAKES AT GREEN VALLEY INDUSTRIAL PARK  
SPALDING COUNTY, GA

PREPARED FOR:  
GRIFFIN-SPALDING DEVELOPMENT AUTHORITY

DATE: 2018-04-09

DRAWN BY: XXX

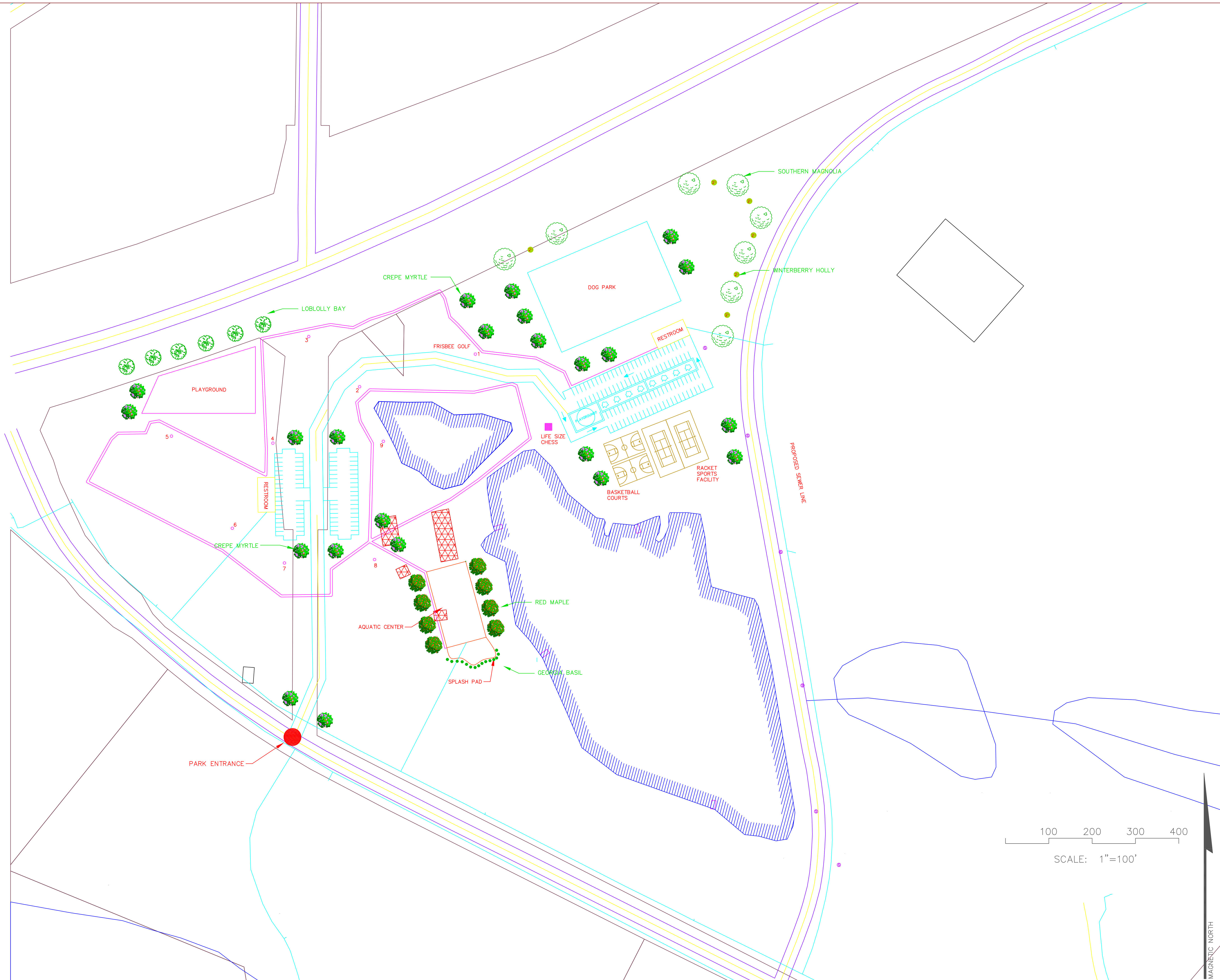
CHECKED BY: XXX

SCALE: 1"=100' (FOR 24"x36")

**E2**

SHEET:





REVISIONS

AKA CIVIL ENGINEERING  
 597 DW BROOKS DRIVE  
 ATHENS, GA 30602  
 912-230-7334 CELL

**LANDSCAPING PLAN**  
**LAKES AT GREEN VALLEY INDUSTRIAL PARK**  
**SPALDING COUNTY, GA**  
 PREPARED FOR:  
**GRIFFIN-SPALDING DEVELOPMENT AUTHORITY**

DATE: 2018-04-09  
 DRAWN BY: XXX  
 CHECKED BY: XXX  
 SCALE: 1"=100' (FOR 24"x36")



SHEET: