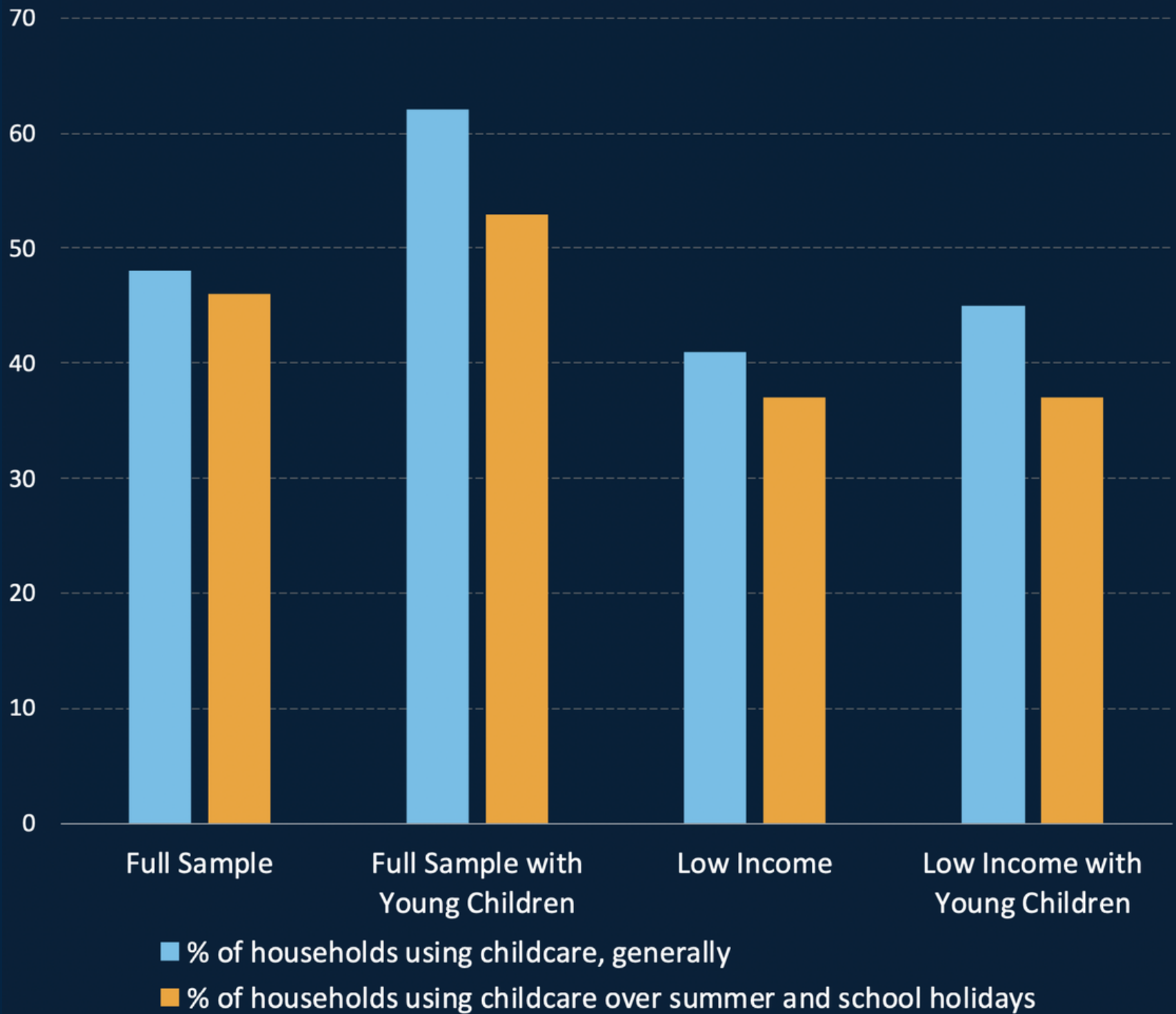


# Childcare Report

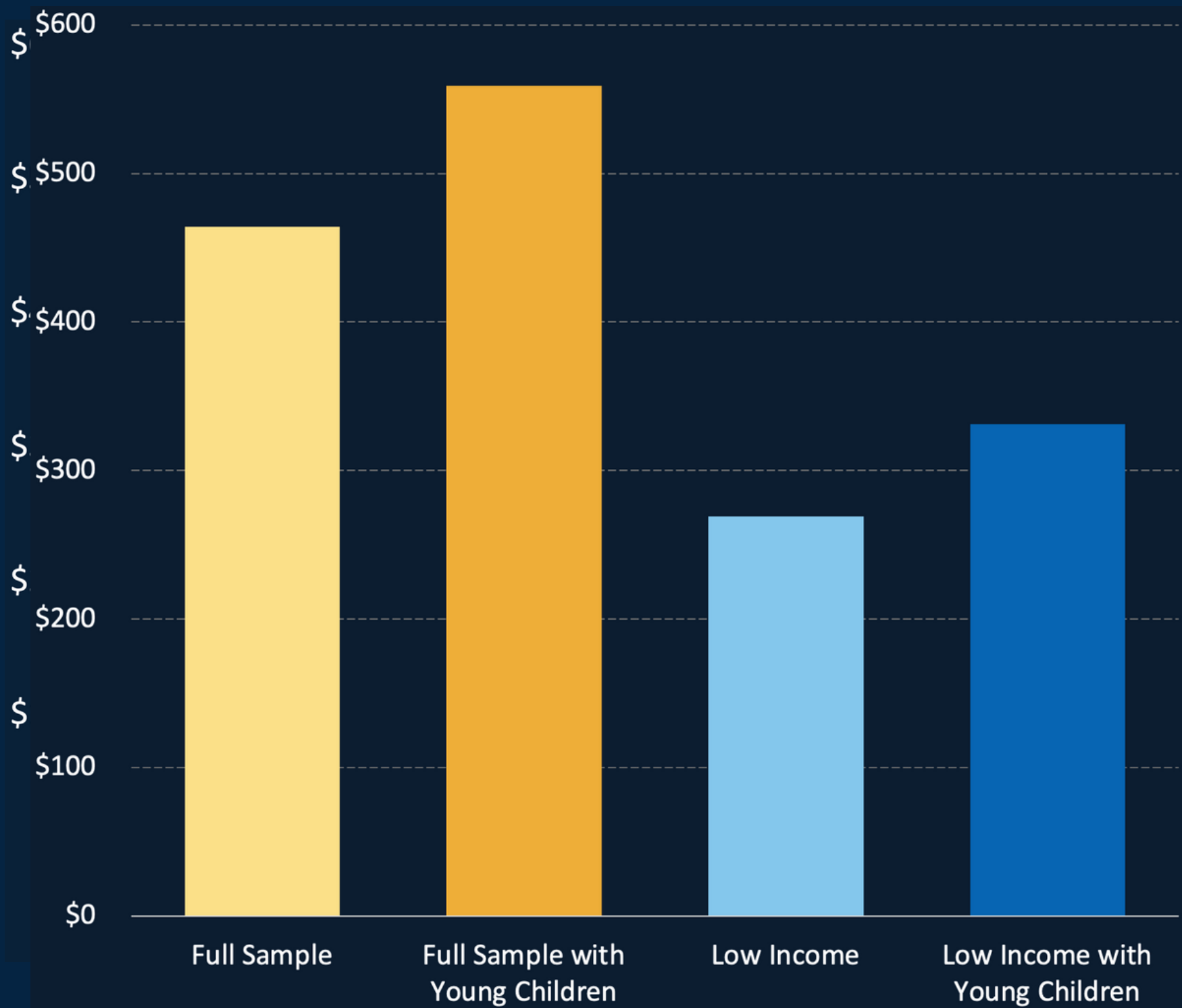
AWP 2.0



# Childcare Utilization



# Cost of Childcare

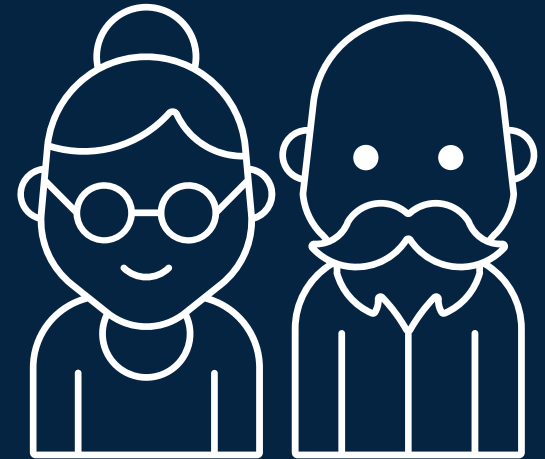


# Most common childcare sources



**35%**

Childcare centers



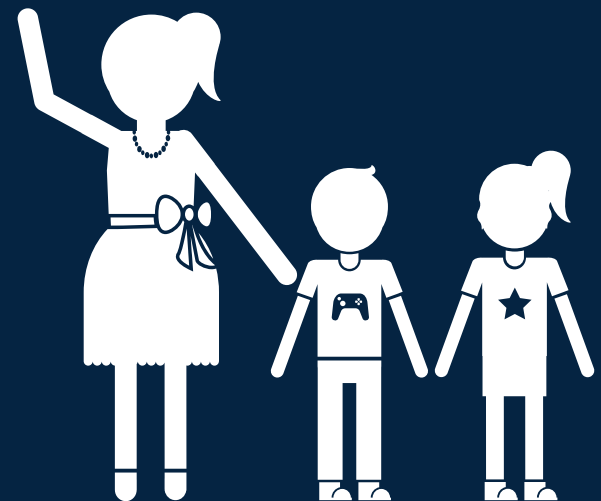
**42%**

Grandparents



**38%**

Afterschool care



**31%**

Babysitter/nanny

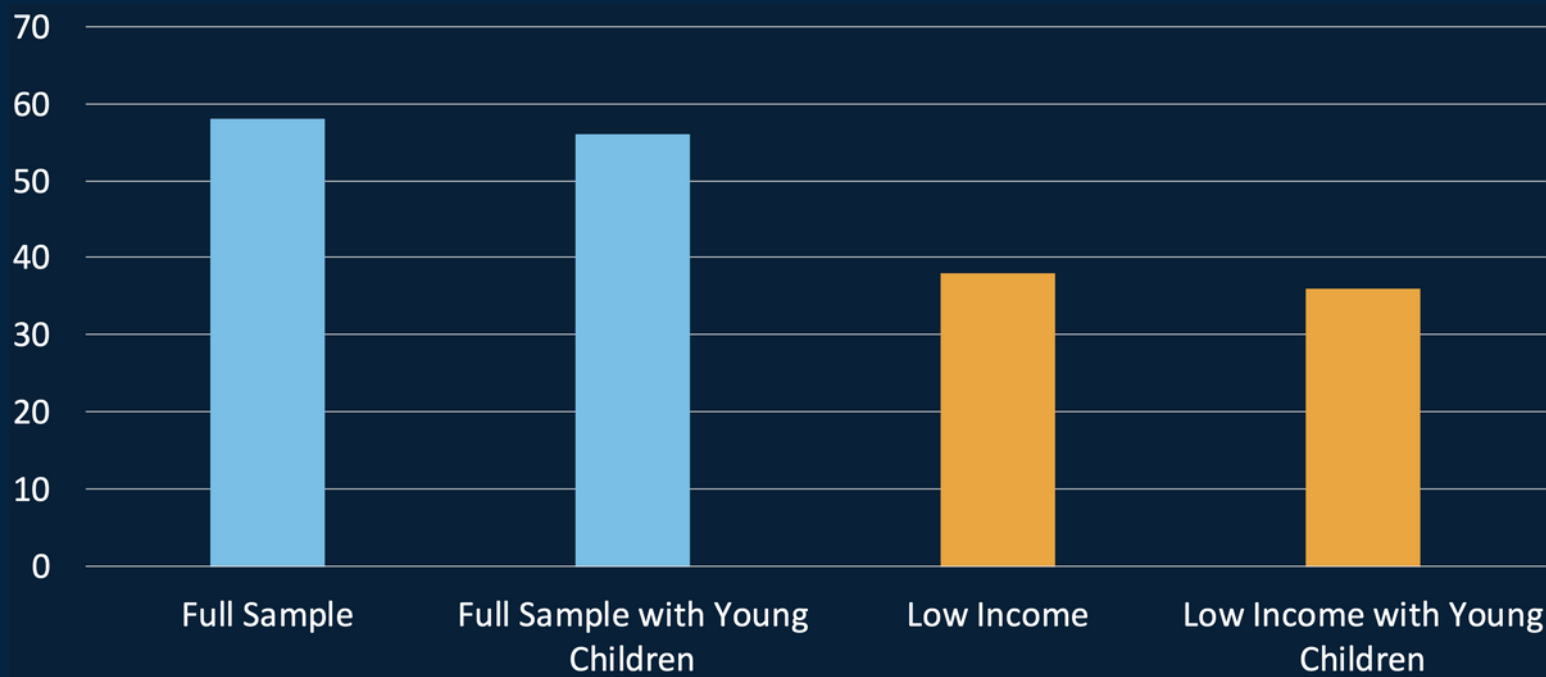


# Childcare Sources

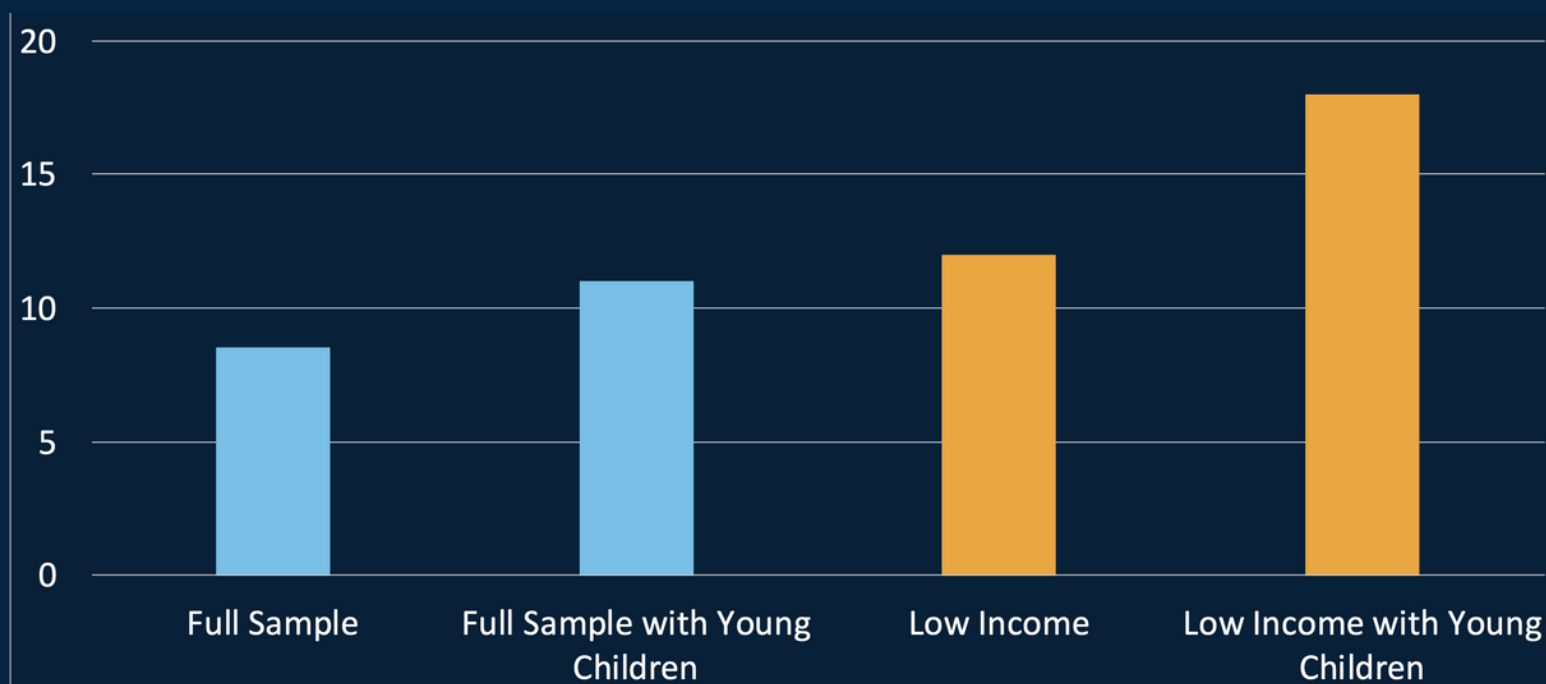
*Lower income households* utilize those in their **social circles** like siblings, grandparents, and family friends for childcare more often than the full sample.

The *full sample* tends to use **childcare centers, babysitters, and after-school care**, all of which are generally associated with **greater cost** compared to childcare sources in social circles





*Lower income households were **LESS likely** to report that they were satisfied every part of their childcare arrangement*



*Lower income households were **MORE likely** to report that more satisfactory childcare arrangements were too expensive*



# Childcare Availability in Athens

<b>Age</b>	<b>Avg. monthly cost</b>	<b>Number of centers</b>	<b>Centers with openings</b>
Infant to 12 months	\$674	11	3
13 months to 2 years	\$638	12	7
2 years to 3 years	\$653	10	6
3 years to 4 years	\$608	12	6
4+ years	\$530	2	0

